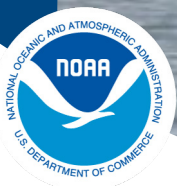


Atlantic Large Whale Take Reduction Plan

Requirements and Management Areas for Northeast Trap/Pot Fisheries

UPDATED MARCH 2022



NOAA
FISHERIES

Contact us for more information:

NOAA Fisheries Greater Atlantic Regional Office

Protected Resources Division

55 Great Republic Drive

Gloucester, MA 01930

978-281-9328

www.fisheries.noaa.gov/alwtrp

CONTENTS

Plan Overview	4
Which Rules Apply to You?	5
Section 1 Universal Requirements for All Trap/Pot Fishermen	6
Section 2 Lobster and Jonah Crab Trap/Pot Requirements	7
• Restricted Areas	8
• Minimum Traps Per Trawl	10
• Gear Marking Requirements	24
• Weak Insertion Requirements	28
Section 3 Northeast Trap/Pot Fisheries Requirements	29
• Management Area Summary	30
• Restricted Areas	32
• Weak Inserts and Gear Marking Summary	33
• Requirements by Management Area	35
Section 4 Atlantic Large Whale Take Reduction Plan Exemptions	52

The Atlantic Large Whale Take Reduction Plan

Regulated Fisheries Under the Atlantic Large Whale Take Reduction Plan

The Atlantic Large whale Take Reduction Plan (Plan) is a program to reduce the risk of serious injury and death of large whales caused by accidental entanglement in U.S. commercial trap/pot and gillnet fishing gear. The Plan is required by the Marine Mammal Protection Act and has been developed by NOAA's National Marine Fisheries Service (NMFS).

The Plan focuses on reducing entanglements of endangered right, humpback, and fin whales. Non-endangered minke whales also benefit from the Plan. Under the Endangered Species Act, federal agencies are required to ensure that permitted activities (such as commercial fishing) do not cause harm to, or jeopardize, the continued existence of any endangered species.

Since the Plan measures are intended to reduce entanglements of right, humpback, and fin whales in commercial fishing gear, these measures also help to reduce the likelihood that federally permitted fishing activities will jeopardize the continued existence of these whales.

The Atlantic Large Whale Take Reduction Team, which consists of fishing industry representatives, environmentalists, state and federal officials, and other interested parties, helped develop the Plan. Information about the process and the team is available on the Plan website (www.fisheries.noaa.gov/ALWTRP). The Plan evolves and changes as circumstances change, and as the team learns more about whale entanglements and how fishing practices might be modified to reduce the risk of entanglement.

The first Plan went into effect in 1997. The regulations contained in that rule have been updated several times, most recently with the 2021 updates for the lobster and Jonah crab fisheries.

This document is a summary of the Plan's commercial Northeast trap/pot fishing regulations.

Note: This guide includes federal requirements only for state and federal waters; contact your state fishery office for any additional requirements within state waters. Should any regulations overlap with the Plan regulations, the more restrictive regulations apply.

Trap/Pots

- Northeast/Mid-Atlantic American lobster trap/pot
- Massachusetts mixed species trap/pot
- Atlantic blue crab trap/pot
- Atlantic mixed species trap/pot which includes, but is not limited to: crab (red, Jonah, and rock), hagfish, finfish (black sea bass, scup, tautog, cod, haddock, pollock, redfish (ocean perch), and white hake), conch/whelk, and shrimp.

Gillnets

- Northeast sink gillnet
- Northeast anchored float gillnet
- Northeast drift gillnet
- Mid-Atlantic gillnet
- Southeastern US Atlantic shark gillnet
- Southeast Atlantic gillnet



Which rules apply to me?

FEDERAL PERMIT HOLDERS

If you hold a federal Northeast lobster permit, any trap that you own that is capable of catching lobster must follow the ALWTRP regulations for the lobster and Jonah crab fisheries.

You will find these regulations in Section 1: Northeast Lobster/Jonah Crab Trap/Pot Guide.

If you do not hold a federal Northeast lobster/Jonah crab permit, but do hold a federal permit for other trap/pot species, your traps must follow the ALWTRP regulations in Section 2: Other Trap/Pot Guide.

STATE AND DUAL STATE/FEDERAL PERMIT HOLDERS

- All federal and state permitted or licensed vessels for lobster/Jonah crab must comply with ALWTRP unless fishing in a state exempt area. If you are fishing in an exempt area, please check with your state.
- State lobster permit holders should view Section 1: Northeast Lobster/Jonah Crab Trap/Pot Guide
- Other trap/pot permit holders should view Section 2: Other Trap/Pot Guide.
- Please be sure to check your state regulations carefully to determine which rules apply to you.

UNIVERSAL TRAP/POT REQUIREMENTS

Apply to ALL ALWTRP regulated trap/pot fisheries

GEAR CONFIGURATION

- No buoy line floating at the surface.
- No wet storage of gear (all gear must be hauled out of the water at least once every 30 days).
- Fishermen are encouraged, but not required, to maintain knot-free buoy lines.
- All groundlines must be made of sinking line.

TRAP/POT WEAK LINK/INSERT REQUIREMENTS

There are different requirements for surface systems (within 2 fathoms of the surface buoy) and the body of the buoy lines:

Within 2 Fathoms of Surface Buoy:

- Weak links within the surface system are no longer required for lobster and Jonah crab trap/pot fisheries, but may still be used.
- To see weak link and insert requirements for within 2 fathoms of surface buoy in other trap/pot fisheries, see page 33.

Buoy Lines:

- See page 28 for weak insert/weak rope requirements.
- Weak inserts must be chosen from the list of NMFS-approved gear.
- For lobster and Jonah crab buoy lines, a web page with approved weak inserts and links is updated frequently. Please check fisheries.noaa.gov/NE-approved-weak.
- For other trap/pot fisheries, see page 33 and the gear guide supplement available online at fisheries.noaa.gov/ALWTRP.

All weak links and inserts must be designed in such a way that the bitter end of the buoy line is clean and free of any knots when the weak link or insert breaks.

SURFACE BUOY MARKING

- Surface buoys must be marked to help identify the associated vessel or fishery by including one of the following: the owner's boat registration number and/or U.S. vessel documentation number; Federal commercial fishing permit number; or whatever positive identification is required by the vessel's home-port state.
- When marking is not already required by state or federal regulations, the letters and numbers must be at least 1 inch (2.5cm) in height; use block letters or Arabic numbers; and be written in a color that contrasts with the color of the buoy.

TRAP/POT GEAR MARKING

- Specific marking requirements are defined for each management area and fishery (see Sections 1 and 2).
- Where solid marks are required, they may be applied with dye, paint, tape, heatshrink tubing, insertion of a colored rope or braided sleeve, or the line may be marked as approved in writing by the Greater Atlantic Regional Administrator.
- Where solid marks are not required, they may be added using dye, paint, tape, heat-shrink tubing, zip ties; spliced in insertion of a colored rope or braided sleeve or other material, or a thin line may be woven into or through the line; or the line may be marked as approved in writing by the Greater Atlantic Regional Administrator.

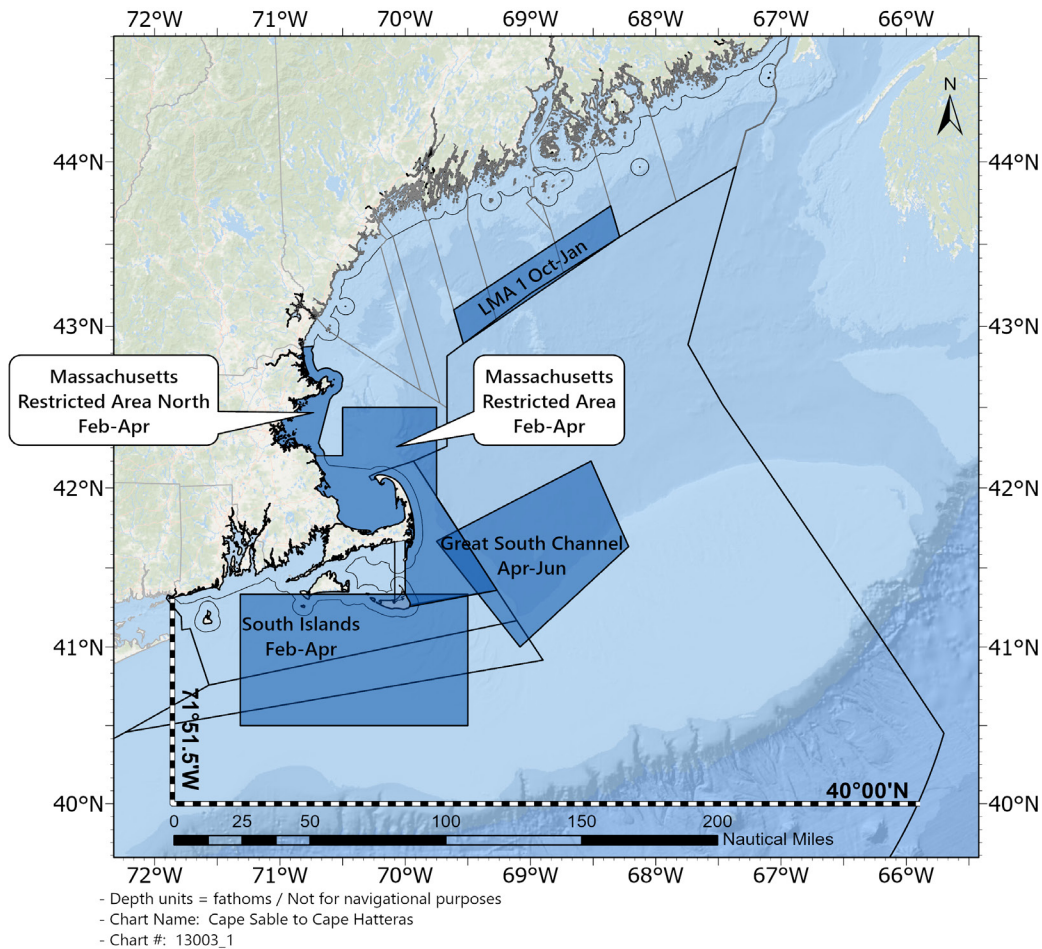
SECTION 1

NORTHEAST LOBSTER AND JONAH CRAB TRAP/POT REQUIREMENTS

The following regulations apply to Northeast lobster and Jonah Crab trap/pot fisheries from Maine, New Hampshire, Massachusetts, and Rhode Island.

Lobster and Jonah Crab Restricted Areas	8
Ropeless Trap/Pot Exempted Fishing Permits	8
Maps and Seasons	9
Minimum Trap/Trawl Requirements	10
• LMA 3	11
• Maine	12
• New Hampshire, Massachusetts, Rhode Island	21
Gear Marking	24
Weak Insertions	28

NORTHEAST LOBSTER AND JONAH CRAB RESTRICTED AREAS



OVERVIEW

All new and existing closures are modified from restricting all trap/pot fishing to only restricting trap/pot fishing that uses persistent (traditional) buoy lines, except for federal waters in the Outer Cape Lobster Management Area (LMA), which remains closed consistent with the Atlantic States Marine Fisheries Commission (ASMFC) American Lobster Interstate Fishery Management Plan. Gear that does not use persistent buoy lines, such as “ropeless” gear that retrieves trap/pot trawls when the vessel is on-site, is now allowed in these areas for research purposes with appropriate state and federal permits (see below).

RESTRICTED AREAS AND EXEMPTED FISHING PERMITS

Exempted Fishing Permits (EFPs) are issued for activities in support of fisheries-related research. There are studies underway to develop fishing methods that do not use buoy lines to retrieve gear and alert other fishermen to the presence of gear on the bottom. Results of this work would enable the fishing industry to operate in areas where persistent buoy lines are prohibited. To participate in this research, federally permitted vessels must operate under EFPs. Given the research, monitoring, and reporting requirements for EFPs, we recommend fishermen partner with research, academic, or fishing industry groups to apply for EFPs.

If you are interested in testing ropeless gear or have another idea for research related to fishing without persistent buoy lines, please contact your NOAA Fisheries regional office. You may also need to obtain authorization from the state that issues your fishing permit.

NORTHEAST LOBSTER AND JONAH CRAB RESTRICTED AREAS

MASSACHUSETTS RESTRICTED AREA (INCLUDING NEW NORTH AREA)

FEBRUARY 1-APRIL 30

COORDINATES:

Longitude	Latitude
-70° 48.98' W	42° 52.32' N
-70° 43.94' W	42° 52.58' N
-70° 38.69' W	42° 12.00' N
-70° 30.00' W	42° 12.00' N
-70° 30.00' W	42° 30.00' N
-69° 45.00' W	42° 30.00' N
-69° 45.00' W	41° 56.50' N
-69° 16.00' W	41° 21.50' N
-69° 57.90' W	41° 15.30' N
-70° 00.00' W	41° 20.30' N
-70° 00.00' W	41° 40.20' N

STATE EXTENSION:

Massachusetts state regulations extend the closure in state waters to May 15, with potential extension until May 31, if whales remain in the area. More information can be found at www.mass.gov/orgs/division-of-marine-fisheries.

GREAT SOUTH CHANNEL RESTRICTED AREA

APRIL 1-JUNE 30

COORDINATES:

Longitude	Latitude
-69° 45.00' W	41° 40.00' N
-69° 05.00' W	41° 00.00' N
-68° 13.00' W	41° 38.00' N
-68° 31.00' W	42° 10.00' N

SOUTH ISLANDS RESTRICTED AREA

FEBRUARY 1-APRIL 30

COORDINATES:

Longitude	Latitude
-71° 19.00' W	41° 20.00' N
-69° 30.00' W	41° 20.00' N
-69° 30.00' W	40° 30.00' N
-71° 19.00' W	40° 30.00' N

LMA 1 RESTRICTED AREA

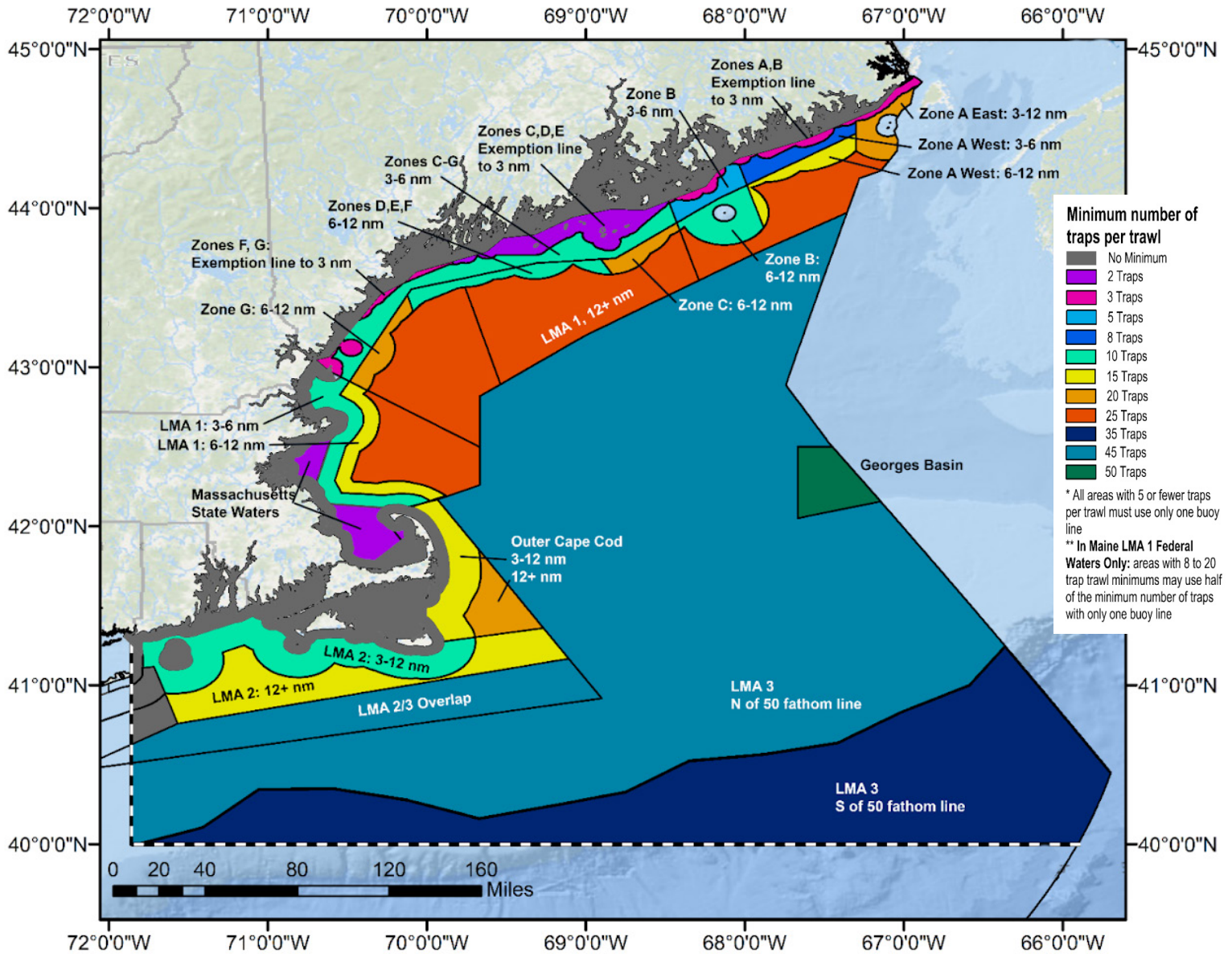
OCTOBER 1-JANUARY 31

COORDINATES:

Longitude	Latitude
-69° 36.77' W	43° 06.00' N
-68° 21.60' W	43° 44.00' N
-68° 17.27' W	43° 32.68' N
-69° 32.16' W	42° 53.52' N

NORTHEAST LOBSTER AND JONAH CRAB MINIMUM TRAPS PER TRAWL

In order to reduce the number of vertical lines in the water that pose a threat of entanglement to right whales aggregating or traveling through these areas, fishermen must increase the number of traps per trawl. The current requirements are listed here.



NORTHEAST LOBSTER AND JONAH CRAB MINIMUM TRAPS PER TRAWL

LMA 3 MINIMUM TRAPS PER TRAWL

FEDERAL AREA	REQUIREMENTS WITH TWO BUOY LINES
North of 50 fathom line on the south end of Georges Bank	45, maximum trawl length 1.75 nm
South of 50 fathom line on the south end of Georges Bank	35, maximum trawl length 1.75 nm
Georges Basin Restricted Area	50, maximum trawl length 1.75 nm

South Georges 50 Fathom Restricted Area:

An area bounded in the south by the 40 degree southern border of the Northeast Region, bounded seaward by the EEZ, and bounded in the north by rhumb lines connecting the following points:

Longitude	Latitude
-71° 49.86' W	40° 00.00' N
-71° 24.69' W	40° 06.47' N
-71° 24.62' W	40° 06.49' N
-71° 03.52' W	40° 20.82' N
-71° 03.42' W	40° 20.89' N
-70° 35.17' W	40° 21.16' N
-70° 35.02' W	40° 21.16' N
-70° 07.34' W	40° 16.84' N
-70° 07.17' W	40° 16.81' N
-69° 40.43' W	40° 09.92' N
-69° 40.25' W	40° 09.87' N
-69° 12.77' W	40° 14.72' N
-69° 12.63' W	40° 14.74' N
-68° 45.19' W	40° 19.83' N
-68° 45.05' W	40° 19.86' N
-68° 21.25' W	40° 31.55' N
-68° 21.10' W	40° 31.63' N
-67° 52.94' W	40°34.09' N
-67° 52.76' W	40° 34.11' N
-67° 24.98' W	40° 38.45' N
-67° 24.90' W	40° 38.46' N
-67° 00.91' W	40° 50.05' N
-67° 00.73' W	40° 50.14' N
-66° 35.45' W	41° 00.10' N
-66° 35.18' W	41° 00.21' N
-66° 21.82' W	41°1 4.84' N

Georges Basin Restricted Area:

An area bounded by rhumb lines connecting the following points.

Longitude	Latitude
-67° 40.02' W	42° 03.00' N
-67°4 0.02' W	42° 30.00' N
-67° 27.00' W	42° 30.00' N
-67° 08.70' W	42° 09.30' N

NORTHEAST LOBSTER AND JONAH CRAB MINIMUM TRAPS PER TRAWL

MAINE LMA 1 MINIMUM TRAPS PER TRAWL

STATE ZONE	EXEMPT WATERS TO 3 NM	3 TO 6* NM	6* TO 12 NM	BEYOND 12 NM
Zone A East	3 for 1 line	10 for 1 line 20 for 2 lines	10 for 1 line 20 for 2 lines	25 for 2 lines
Zone A West	3 for 1 line	4 for 1 line 8 for 2 lines	8 for 1 line 15 for 2 lines	25 for 2 lines
Zone B	3 for 1 line	5 for 1 line	5 for 1 line 10 for 2 lines	25 for 2 lines
Zone C	2 for 1 line 4 for 2 lines	5 for 1 line 10 for 2 lines	10 for 1 line 20 for 2 lines	25 for 2 lines
Zone D	2 for 1 line 4 for 2 lines	5 for 1 line 10 for 2 lines	5 for 1 line 10 for 2 lines	25 for 2 lines
Zone E	2 for 1 line 4 for 2 lines	5 for 1 line 10 for 2 lines	5 for 1 line 10 for 2 lines	25 for 2 lines
Zone F	3 for 1 line	5 for 1 line 10 for 2 lines	5 for 1 line 10 for 2 lines	25 for 2 lines
Zone G	3 for 1 line	5 for 1 line 10 for 2 lines	10 for 1 line 20 for 2 lines	25 for 2 lines

*Note that the 6 nm line refers to an approximation, described in 50 CFR 229.32 (a)(2)(ii).

**The dividing line between Maine Zone A East and Maine Zone A West is 67°18.00' W.

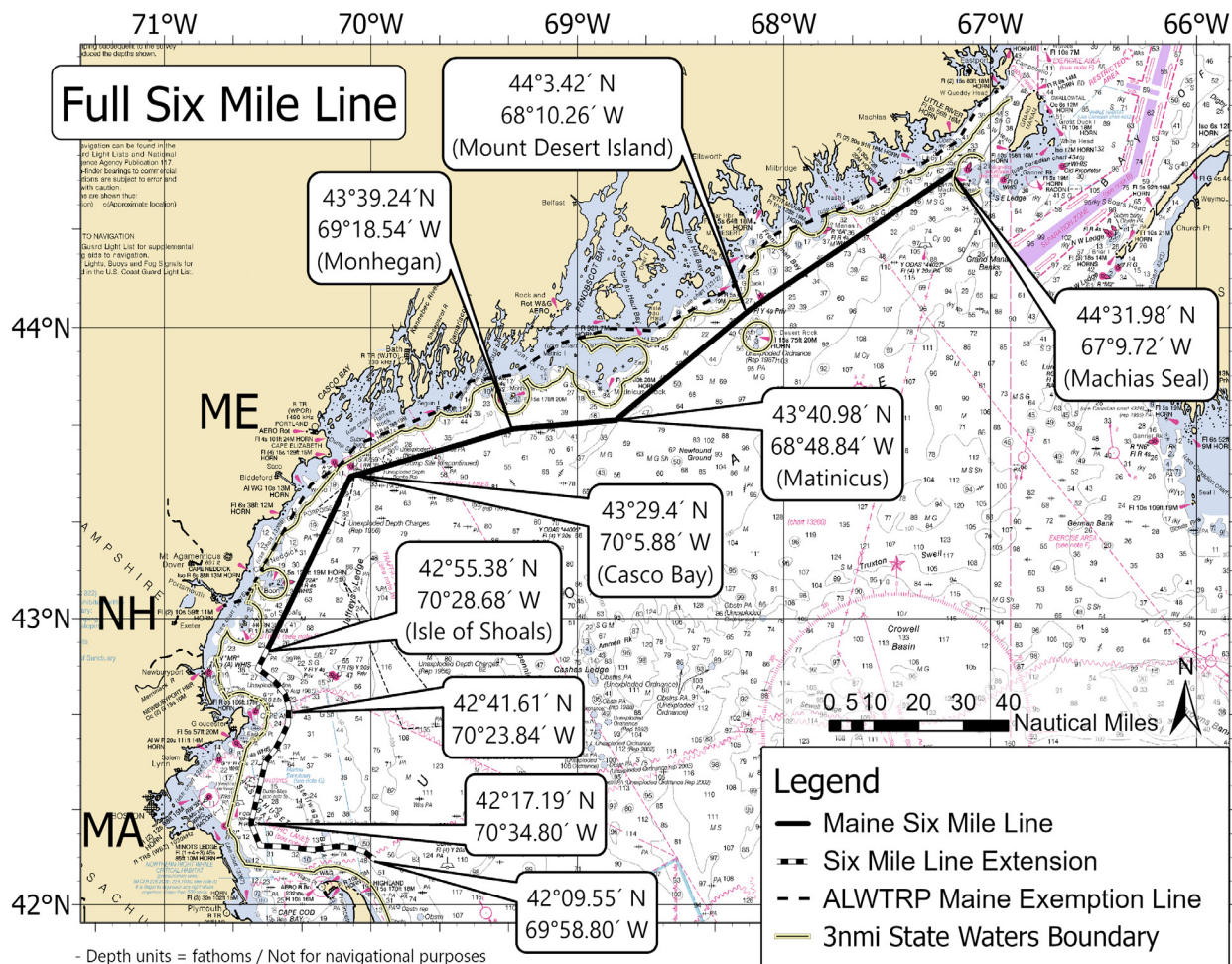
NORTHEAST LOBSTER AND JONAH CRAB MINIMUM TRAPS PER TRAWL

MAINE SIX MILE LINE WATERS

The six-mile line is a line connecting the following points (Machias Seal to Isle of Shoals)

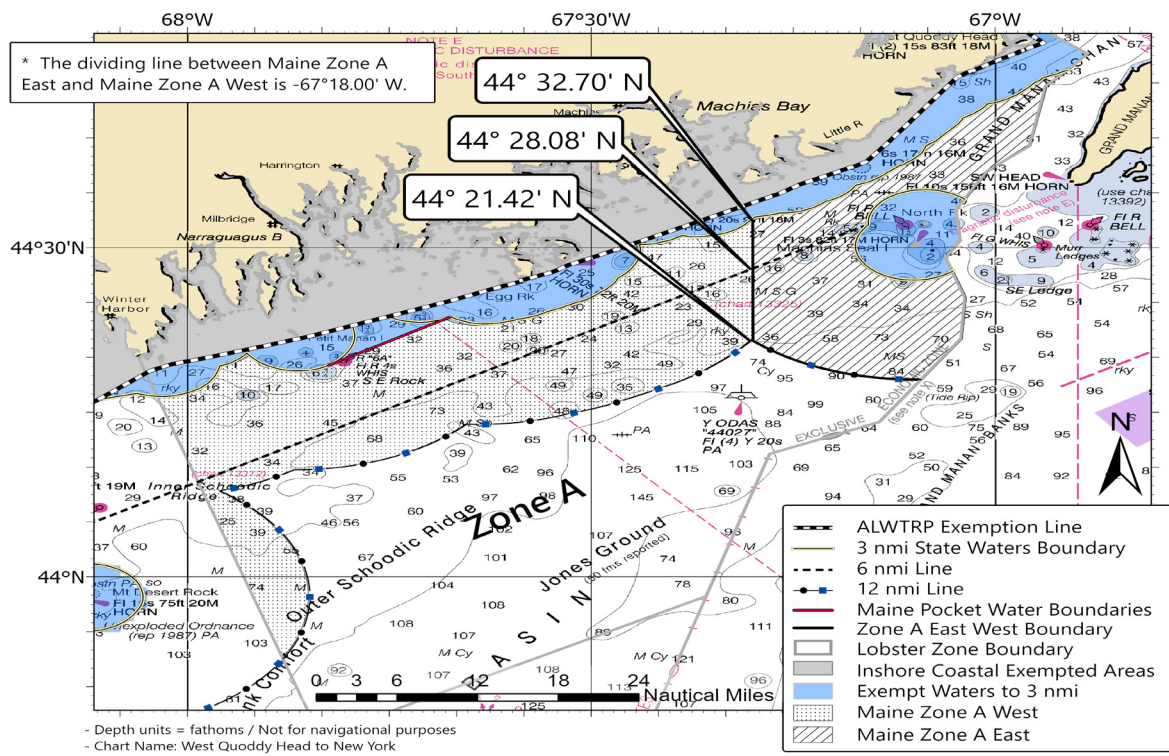
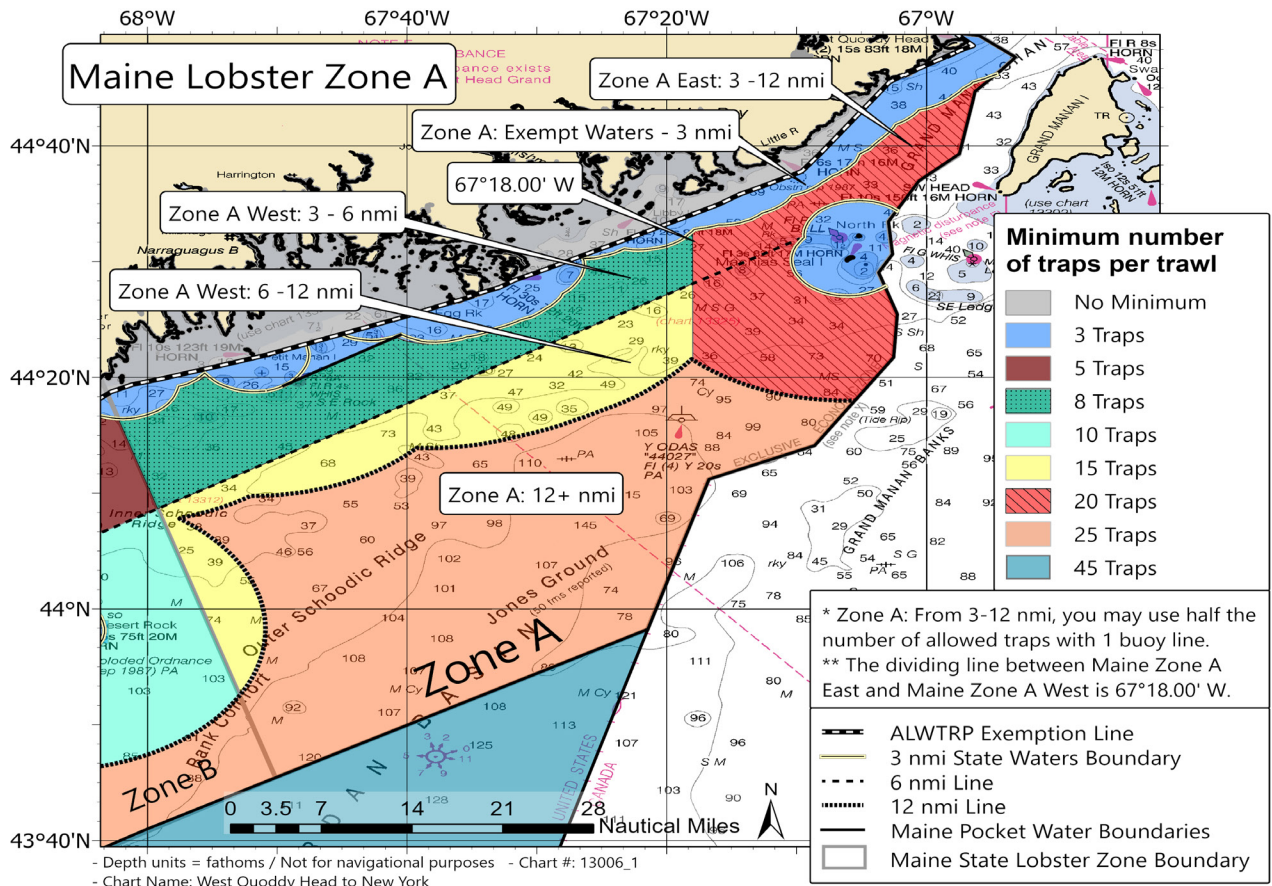
COORDINATES:

Longitude	Latitude	Point
-67° 9.72' W	44° 31.98' N	(Machias Seal)
-68° 10.26' W	44° 3.42' N	(Mount Desert Island)
-68° 48.84' W	43° 40.98' N	(Matinicus)
-69° 18.54' W	43° 39.24' N	(Monhegan)
-70° 5.88' W	43° 29.4' N	(Casco Bay)
-70° 28.68' W	42° 55.38' N	(Isle of Shoals)



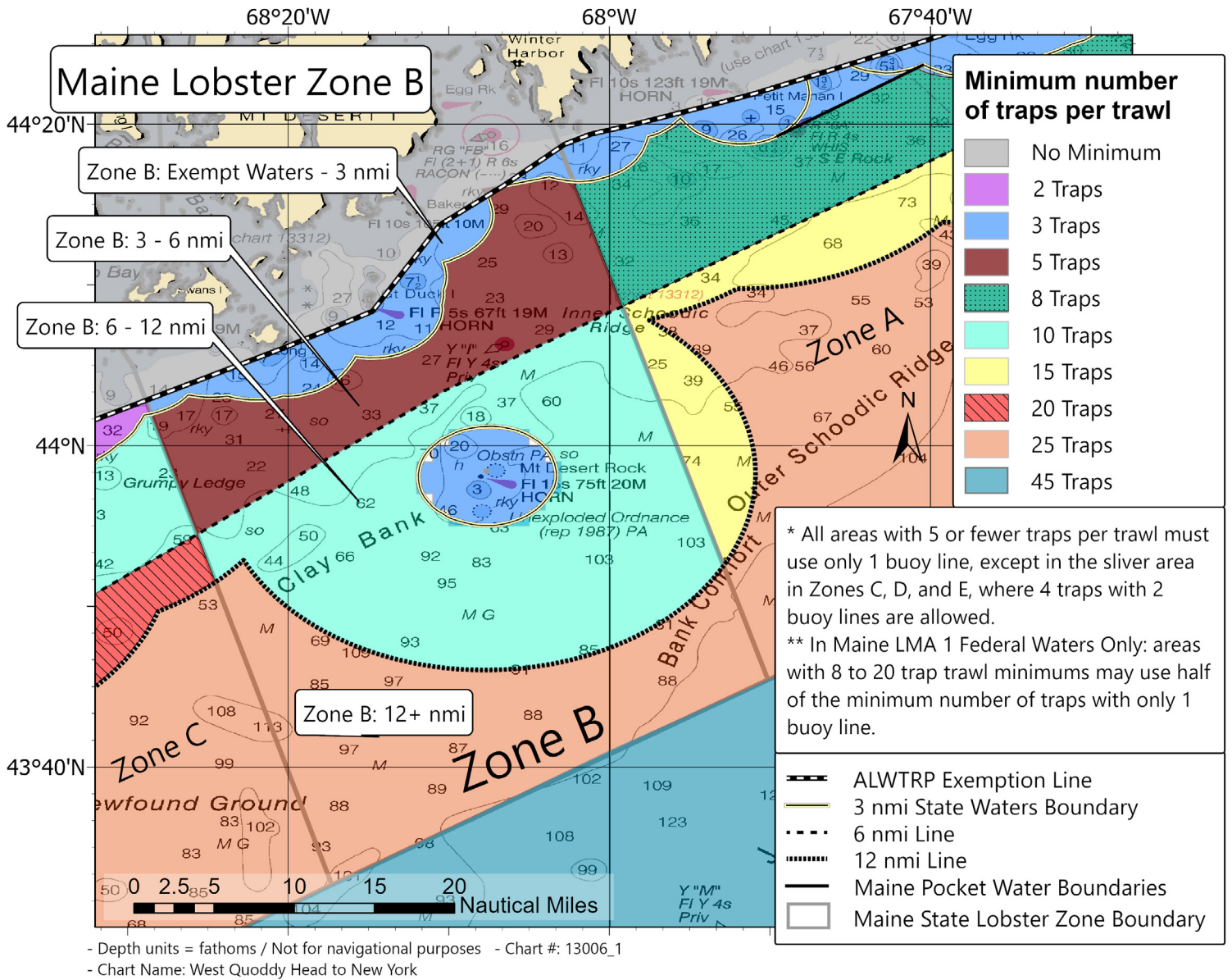
NORTHEAST LOBSTER AND JONAH CRAB MINIMUM TRAPS PER TRAWL

MAINE LOBSTER ZONE A MINIMUM TRAPS PER TRAWL



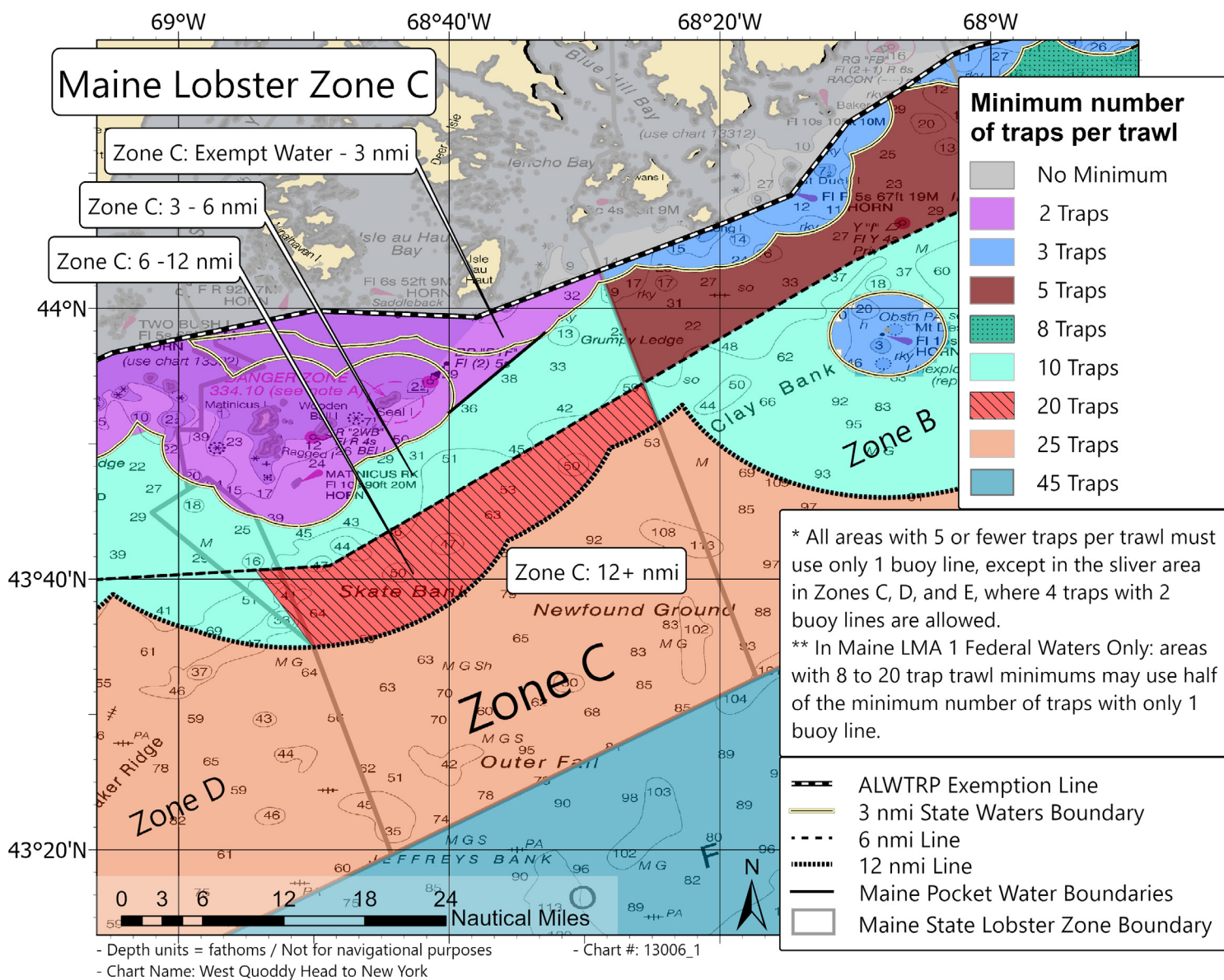
NORTHEAST LOBSTER AND JONAH CRAB MINIMUM TRAPS PER TRAWL

MAINE LOBSTER ZONE B MINIMUM TRAPS PER TRAWL



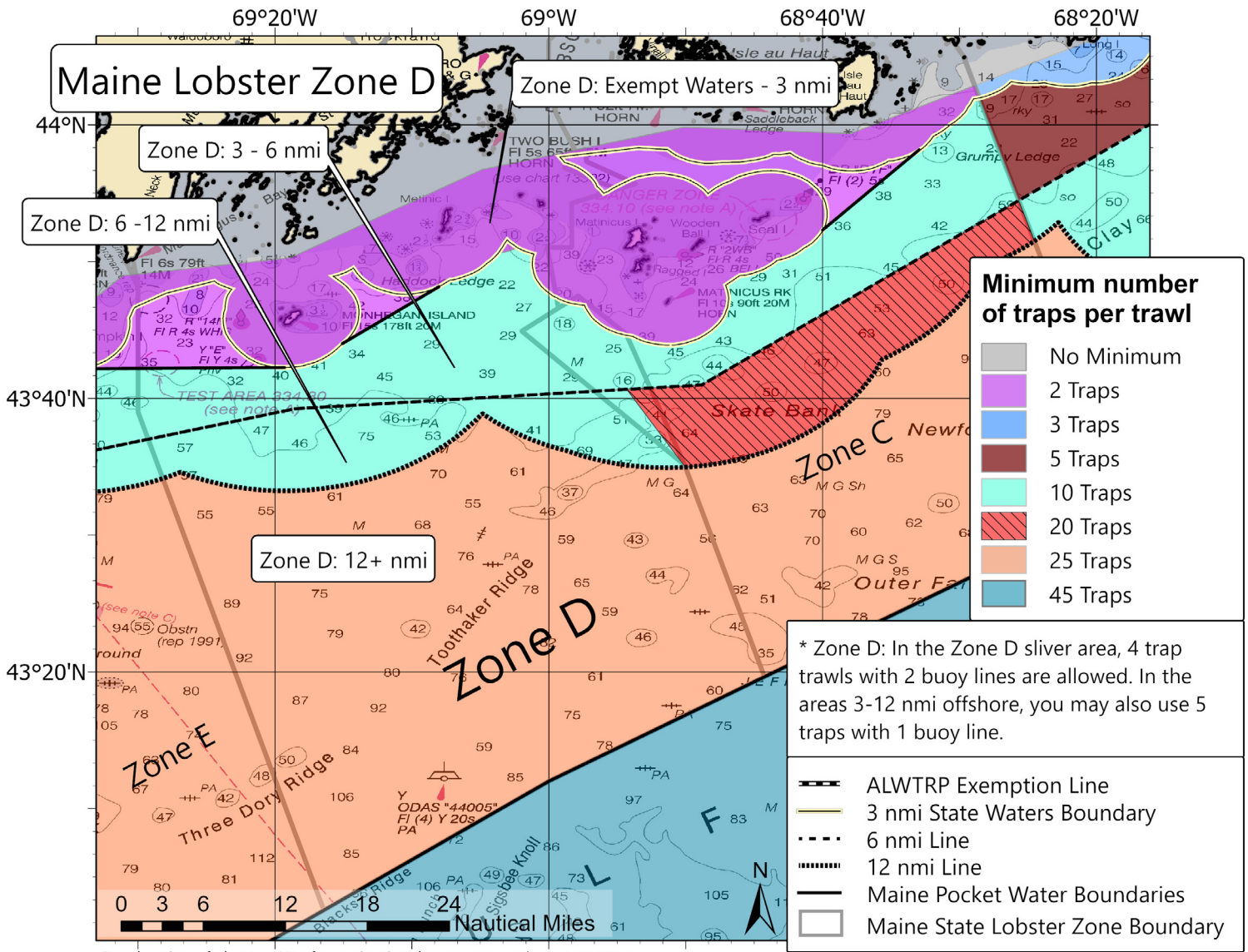
NORTHEAST LOBSTER AND JONAH CRAB MINIMUM TRAPS PER TRAWL

MAINE LOBSTER ZONE C MINIMUM TRAPS PER TRAWL



NORTHEAST LOBSTER AND JONAH CRAB MINIMUM TRAPS PER TRAWL

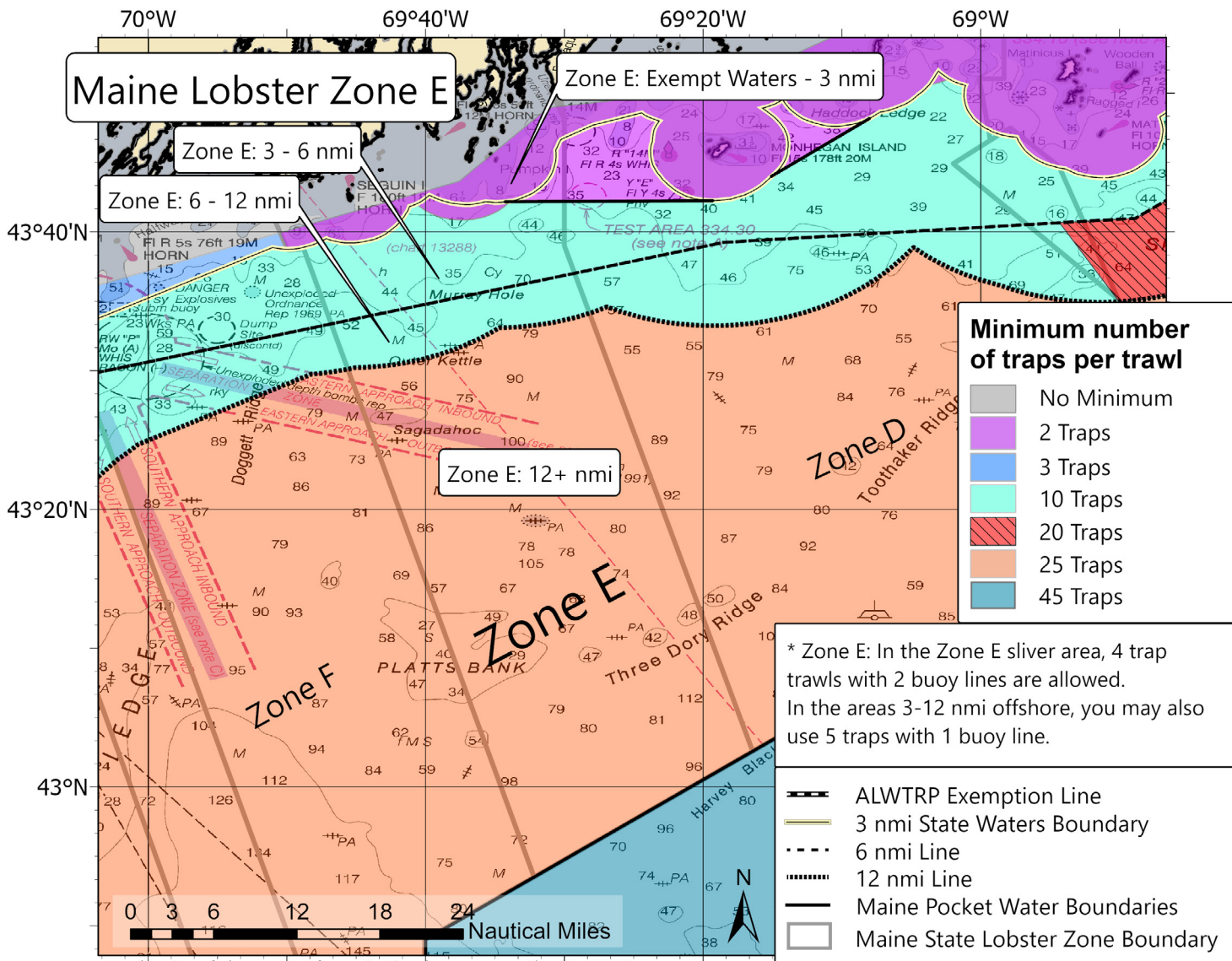
MAINE LOBSTER ZONE D MINIMUM TRAPS PER TRAWL



- Depth units = fathoms / Not for navigational purposes - Chart #: 13006_1
 - Chart Name: West Quoddy Head to New York

NORTHEAST LOBSTER AND JONAH CRAB MINIMUM TRAPS PER TRAWL

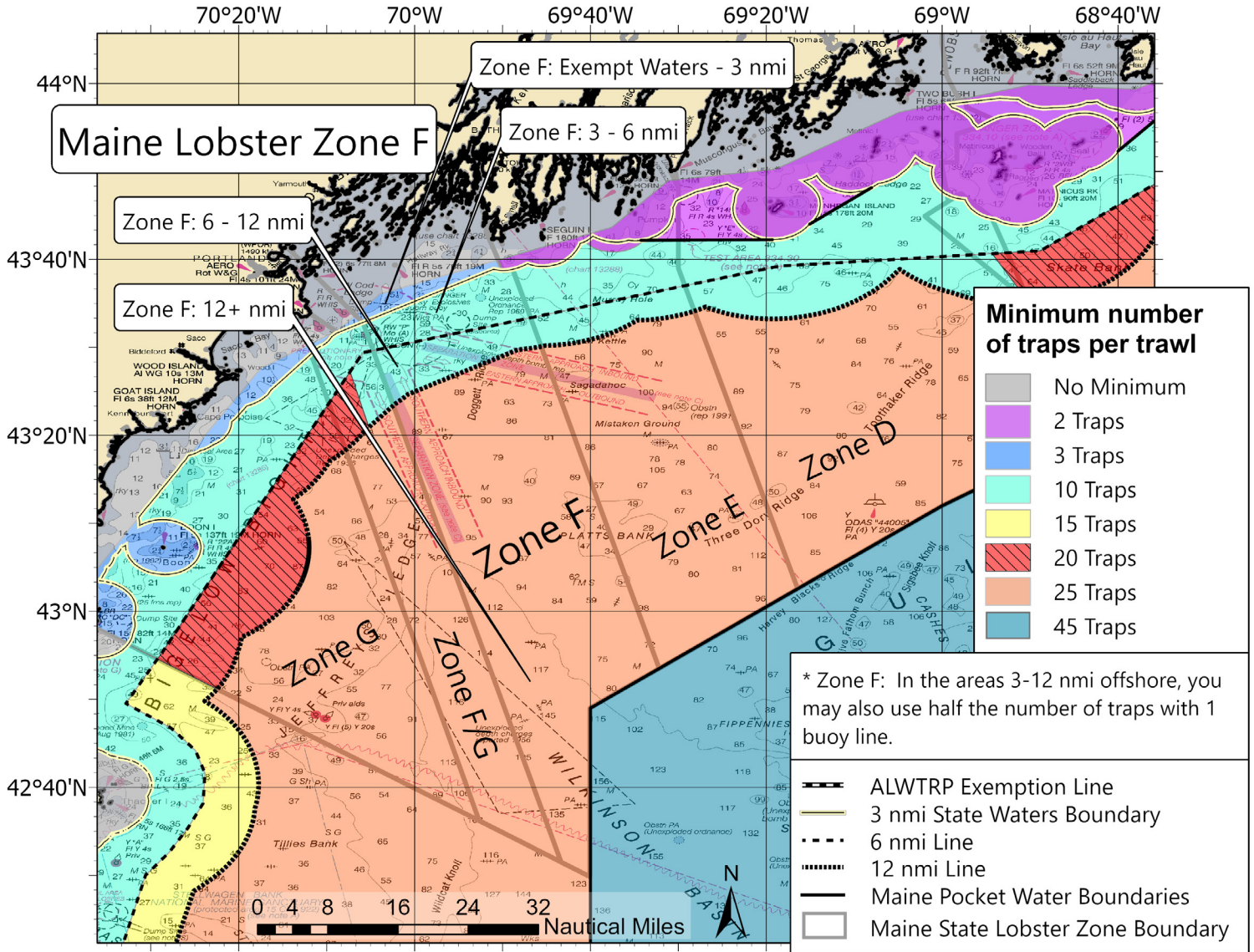
MAINE LOBSTER ZONE E MINIMUM TRAPS PER TRAWL



- Depth units = fathoms / Not for navigational purposes - Chart #: 13006_1
 - Chart Name: West Quoddy Head to New York

NORTHEAST LOBSTER AND JONAH CRAB MINIMUM TRAPS PER TRAWL

MAINE LOBSTER ZONE F MINIMUM TRAPS PER TRAWL

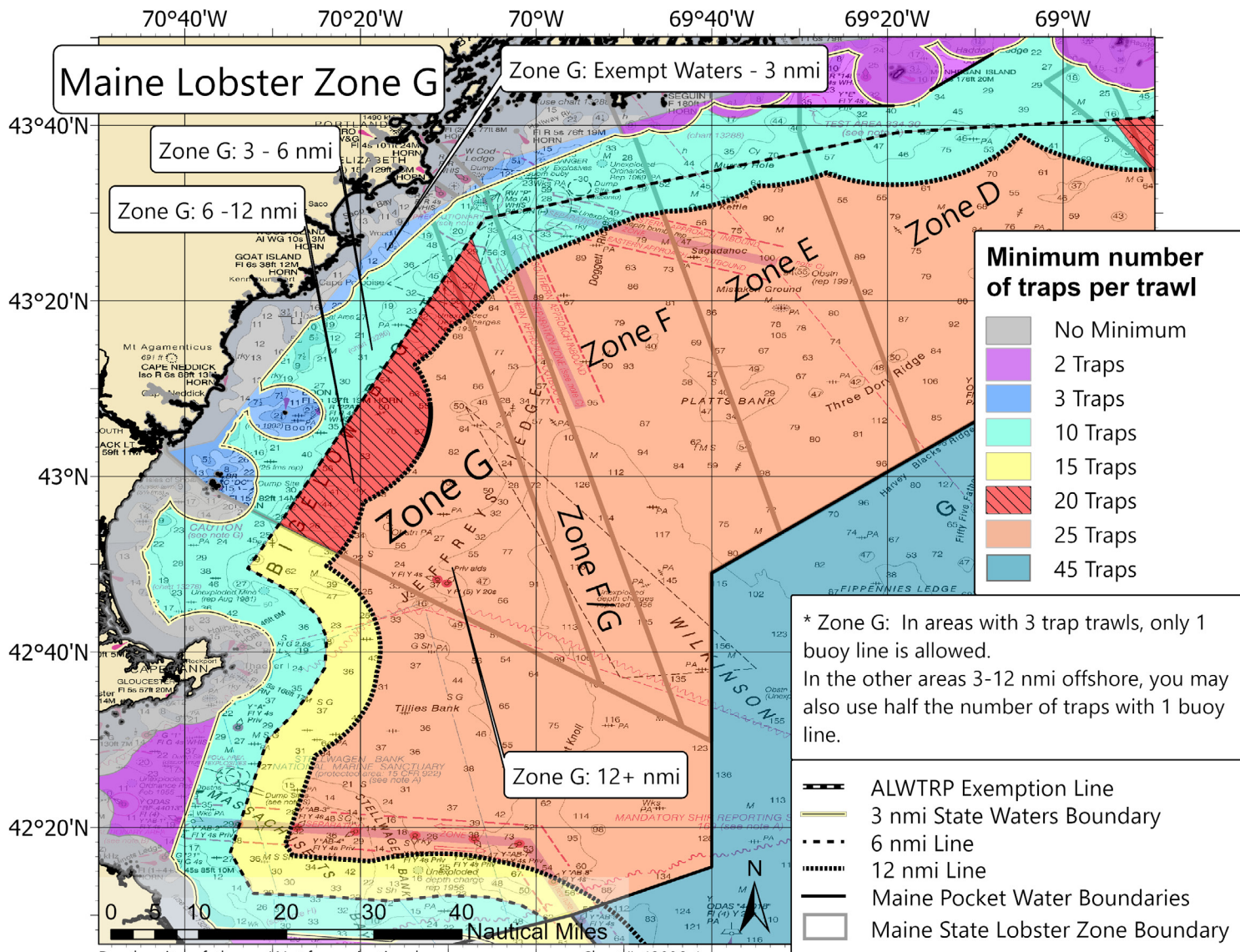


- Depth units = fathoms / Not for navigational purposes
 - Chart Name: West Quoddy Head to New York

- Chart #: 13006_1

NORTHEAST LOBSTER AND JONAH CRAB MINIMUM TRAPS PER TRAWL

MAINE LOBSTER ZONE G MINIMUM TRAPS PER TRAWL



- Depth units = fathoms / Not for navigational purposes
 - Chart Name: West Quoddy Head to New York

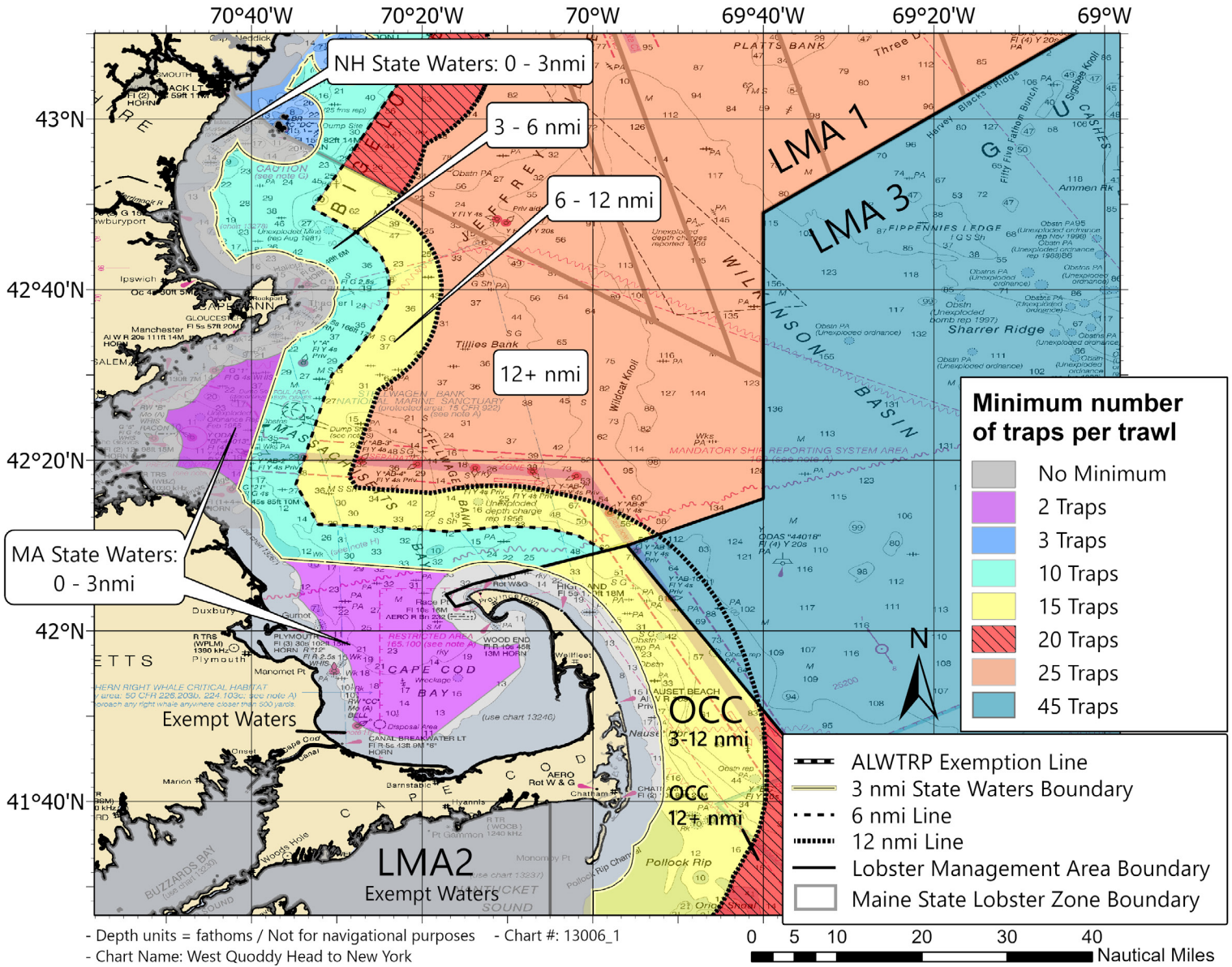
NORTHEAST LOBSTER AND JONAH CRAB MINIMUM TRAPS PER TRAWL

NEW HAMPSHIRE, MASSACHUSETTS, AND RHODE ISLAND MINIMUM TRAPS PER TRAWL REQUIREMENTS

LOBSTER MANAGEMENT AREAS (LMA)	MINIMUM TRAPS/TRAWL
State Waters (0-3nm, non-exempt waters)	
New Hampshire	No minimum
Massachusetts	No minimum or 2 (depending on location)
Rhode Island	No minimum
LMA 1	
3-6* nm	10 (no change)
6*-12 nm	15
12+ nm	25
Outer Cape Cod	
3-12 nm	15
12+ nm	20
LMA 2 (no changes)	
3-12 nm	10
12+ nm	15
LMA 2/3 overlap	15 (if you have an LMA 2 permit only) 45 (if you have an LMA 3 permit)

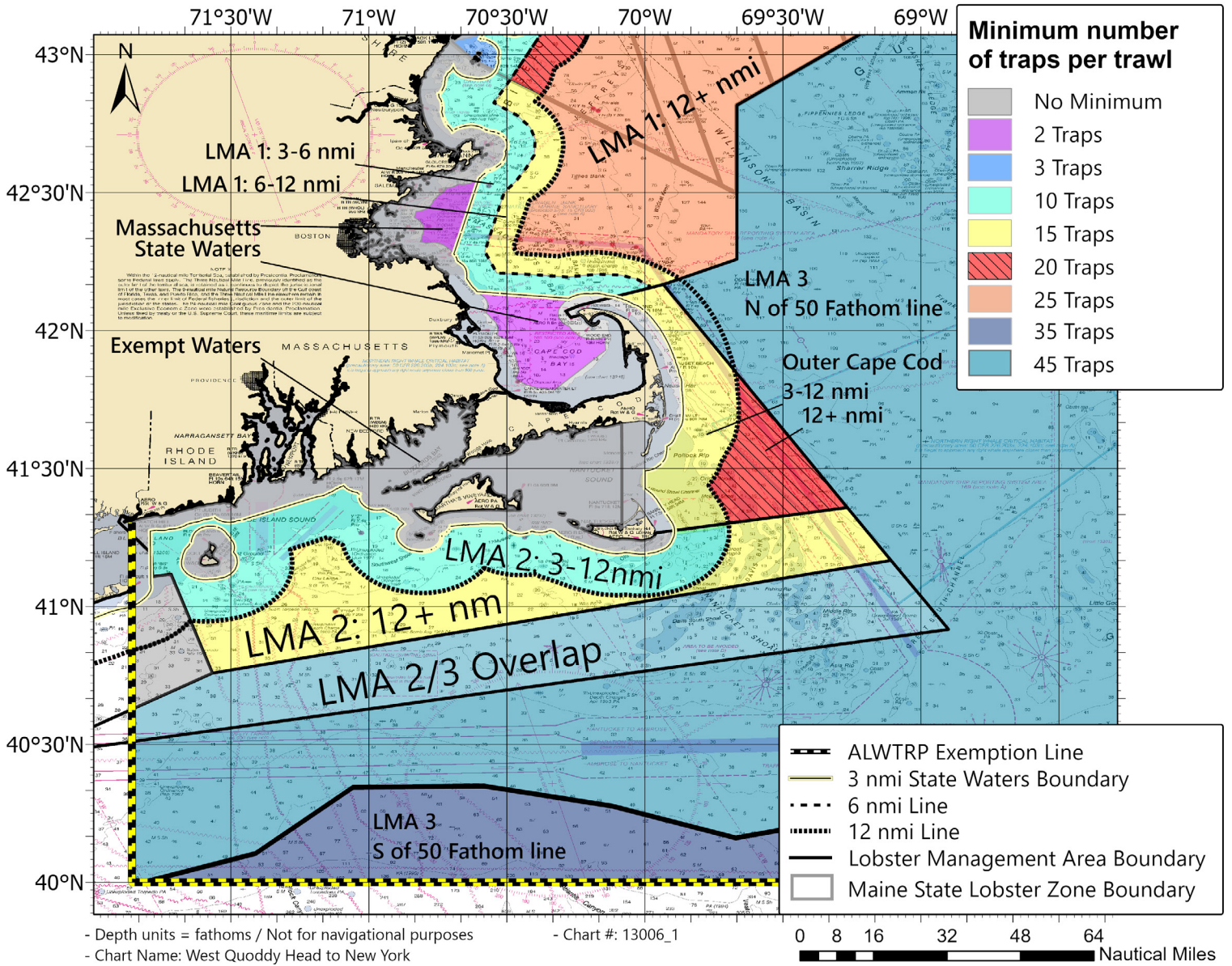
NORTHEAST LOBSTER AND JONAH CRAB MINIMUM TRAPS PER TRAWL

NEW HAMPSHIRE AND MASSACHUSETTS MINIMUM TRAPS PER TRAWL



NORTHEAST LOBSTER AND JONAH CRAB MINIMUM TRAPS PER TRAWL

RHODE ISLAND AND MASSACHUSETTS MINIMUM TRAPS PER TRAWL



NORTHEAST LOBSTER AND JONAH CRAB GEAR MARKING

The following table describes gear marking requirements for lobster and Jonah crab trap/pot gear in Northeast federal waters. Requirements for all other management areas and other fisheries remain the same. These requirements represent the minimum markings. Additional markings are also allowed. Visit www.fisheries.noaa.gov/alwtrp for complete regulations.

For the purpose of this document, the terms “surface system” means any combination of buoys and highfliers connected to each other on the surface and “body of the buoy line” means that portion of the buoy line that connects the trap or groundline to the surface buoy or surface system.

NORTHEAST LOBSTER AND JONAH CRAB GEAR MARKING FOR FEDERAL WATERS

AREA COLOR IS BASED ON PERMIT’S PRINCIPAL PORT (NON-LMA 3) OR LMA 3 PERMIT

MAINE

You must have at least 4 sets (PURPLE and GREEN) of marks: 1 set within 2 fathoms of the surface buoy or surface system, and 3 more in the body of the buoy line:

- One 3-foot SOLID PURPLE mark within 6 inches of one 12-inch GREEN mark in the top 2 fathoms of the surface buoy or surface system; and
- One 12-inch PURPLE mark within 6 inches of one 12-inch GREEN mark at the top, middle, and bottom of the body of the buoy line.

NEW HAMPSHIRE

You must have at least 4 sets (YELLOW and GREEN) of marks: 1 set within 2 fathoms of the surface buoy or surface system and 3 more in the body of the buoy line:

- One 3-foot SOLID YELLOW mark within 6 inches of one 12-inch GREEN mark in the top 2 fathoms of surface buoy or surface system; and
- One 12-inch YELLOW mark within 6 inches of one 12-inch GREEN mark at the top, middle, and bottom of the body of the buoy line

MASSACHUSETTS

You must have at least 4 sets (RED and GREEN) of marks: 1 set within 2 fathoms of the surface buoy or surface system, and 3 more in the body of the buoy line:

- One 3-foot SOLID RED mark within 6 inches of one 12-inch SOLID GREEN* mark in the top 2 fathoms of the surface buoy or surface system; and
- One 12-inch RED mark (may be longer) within 6 inches of one 12-inch GREEN mark at the top, middle, and bottom of the body of the buoy line.
- If you have line marked at every 60 feet as required by the state, there must be a GREEN mark next to all RED state marks.

* State regulations require SOLID GREEN marks in the surface system.

RHODE ISLAND

You must have at least 4 sets (SILVER/GRAY and GREEN) of marks: 1 set within 2 fathoms of the surface buoy or surface system and 3 more in the body of the buoy line:

- One 3-foot SOLID SILVER/GRAY color mark within 6 inches of one 12-inch GREEN mark in the top 2 fathoms of surface buoy or surface system; and
- One 12-inch SILVER/GRAY mark within 6 inches of a 12-inch GREEN mark at the top, middle, and bottom of the buoy line below the surface buoy or surface system.

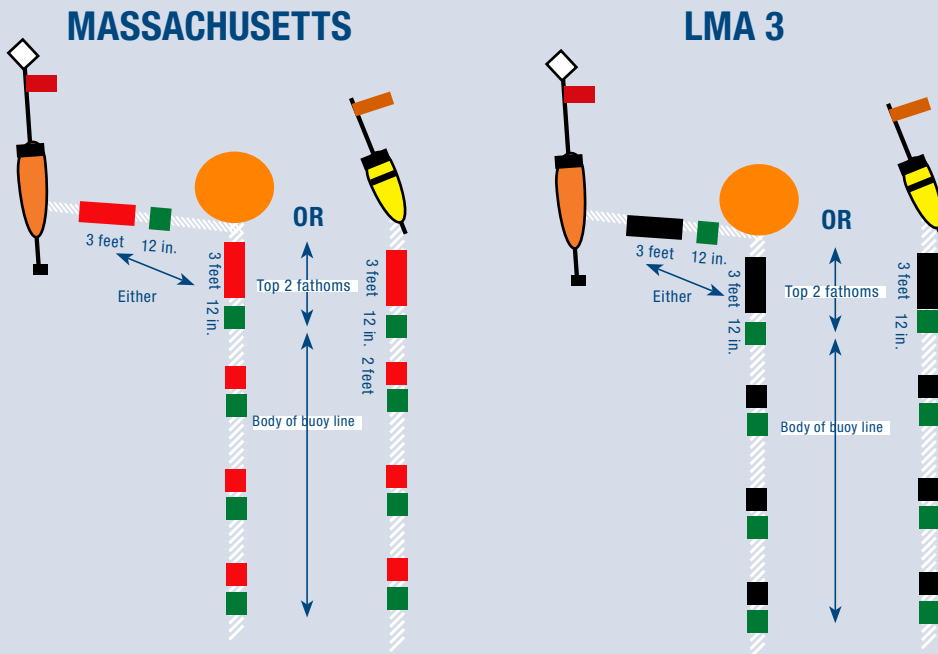
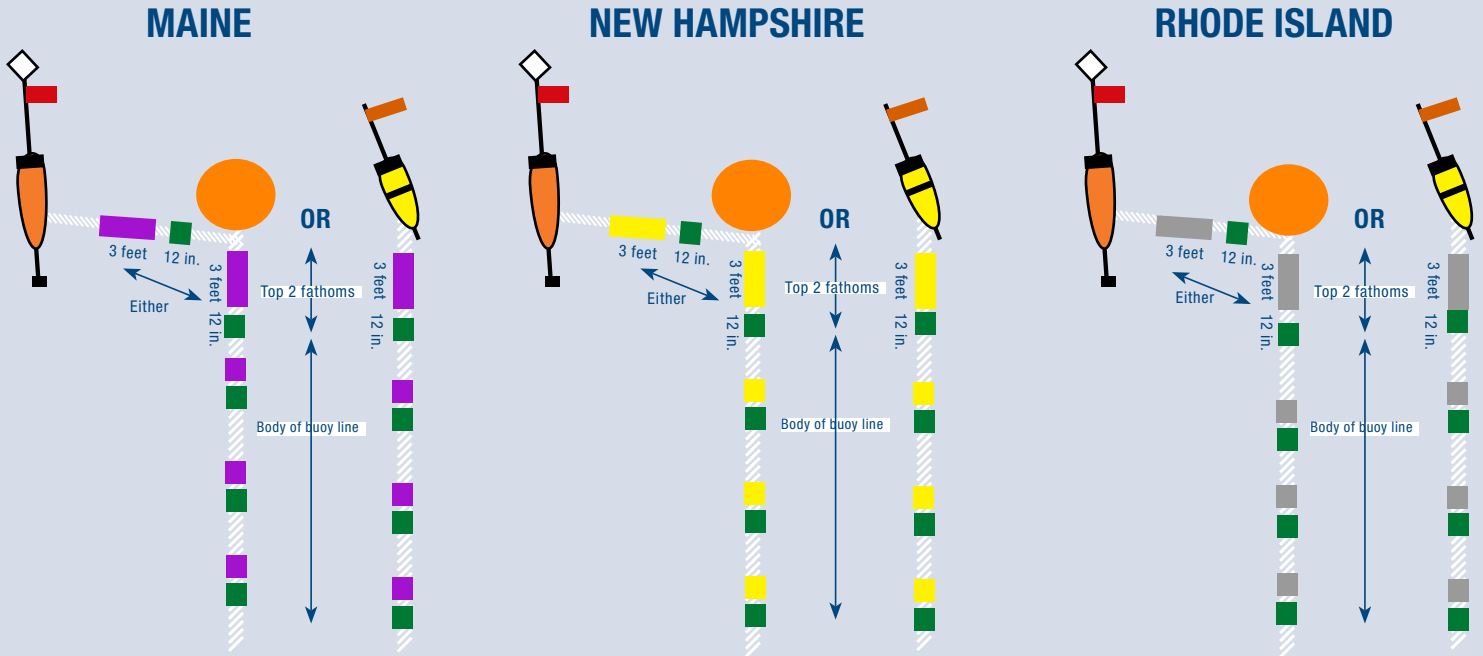
LMA 3

You must have at least 4 sets (BLACK and GREEN) of marks: 1 set within 2 fathoms of the surface buoy or surface system and 3 more in the body of the buoy line:

- One 3-foot SOLID BLACK color mark within 6 inches of one 12-inch GREEN mark in the top 2 fathoms of the surface buoy or surface system; and
- One 12-inch BLACK mark within 6 inches of a 12-inch GREEN MARK at the top, middle, and bottom of the body of the buoy line.

NORTHEAST LOBSTER AND JONAH CRAB GEAR MARKING

EXAMPLES OF LOBSTER AND JONAH CRAB GEAR MARKING FOR FEDERAL WATERS AREA COLOR IS BASED ON PERMIT'S PRINCIPAL PORT (NON-LMA 3) OR LMA 3 PERMIT



MARKING GEAR

A solid colored rope may be used for state or LMA 3 gear marks, including the solid surface mark.

The solid surface 3-foot mark may be applied with dye, paint, tape, heat-shrink tubing, insertion of a colored rope or braided sleeve, or the line may be marked as approved in writing by the Greater Atlantic Regional Administrator.

Rope with a distinctive colored strand throughout or Candy Cane rope may be used instead of the specific state or LMA 3 gear marks in the body of the buoy line.

For 12-inch federal marks or where state or LMA 3 colored rope is not used, the 12-inch marks may be added using dye, paint, tape, heat-shrink tubing, zip ties; spliced in insertion of a colored rope or braided sleeve or other material, or a thin line may be woven into or through the line; or the line may be marked as approved in writing by the Greater Atlantic Regional Administrator.

NORTHEAST LOBSTER AND JONAH CRAB GEAR MARKING

The following table describes gear marking requirements for lobster and Jonah crab trap/pot gear in Northeast state waters. **Check with your state agency for the latest information on state gear marking requirements, including in Maine Exempt Waters. The information below is subject to change by states.**

For the purpose of this document, the terms “surface system” means any combination of buoys and highfliers connected to each other on the surface and “body of the buoy line” means that portion of the buoy line that connects the trap or groundline to the surface buoy or surface system.

NORTHEAST LOBSTER AND JONAH CRAB GEAR MARKING FOR STATE WATERS

MAINE

You must have at least 3 PURPLE marks: 1 within 2 fathoms of the surface buoy or surface system and 2 more in the body of the buoy line:

- One 3-foot SOLID PURPLE mark within 2 fathoms of the surface buoy or system; and
- One 12-inch PURPLE mark in the top 50% of the body of the buoy line and one 12-inch PURPLE mark in the bottom 50% of the body of the buoy line.

Maine Exempt Waters have different state requirements that are not included here.

NEW HAMPSHIRE

You must have at least 3 YELLOW marks: 1 within 2 fathoms of the surface buoy or system and 2 more inbody of the buoy line:

- One 3-foot SOLID YELLOW mark within 2 fathoms of the surface buoy or surface system; and
- One 12-inch YELLOW mark in the top 50% of buoy line and one 12-inch YELLOW mark in the bottom 50% body of the buoy line.

MASSACHUSETTS

You must have at least 5 RED marks: 1 within 2 fathoms of the surface buoy or surface system, and 4 more in the body of the buoy line:

- One 3-foot SOLID RED mark within the top 2 fathoms of rope, below the surface buoy or surface system; and
- Four 2-foot RED marks; two in the top 50% of the buoy line and two 2-foot RED marks in the bottom 50% of the body of the buoy line.

There must be at least one solid or non-solid RED mark every 60 feet within the body of the buoy line.

If you are using weak inserts that are RED (such as an insert of weak CANDYCANE or RED rope or has a RED tracer in it), then the weak insert may double as a RED mark in the body of the buoy line.

If the buoy line is RED or RED/WHITE (CANDYCANE), WHITE marks must be substituted for RED marks in the buoy line.

RHODE ISLAND

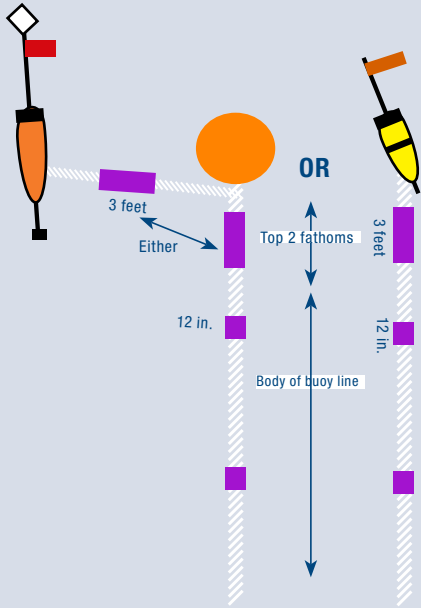
You must have at least 3 SILVER/GRAY marks: 1 within 2 fathoms of the surface buoy or surface system and 2 more in the body of the buoy line:

- One 3-foot SOLID SILVER/GRAY mark within 2 fathoms of surface buoy or surface system; and
- One 12-inch SILVER/GRAY mark in the top 50% of buoy line and one 12-inch SILVER/GRAY mark in the bottom 50% body of the buoy line.

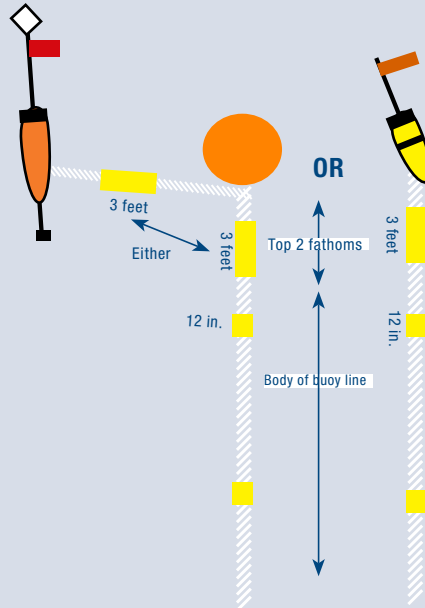
NORTHEAST LOBSTER AND JONAH CRAB GEAR MARKING

LOBSTER AND JONAH CRAB GEAR MARKING FOR STATE WATERS

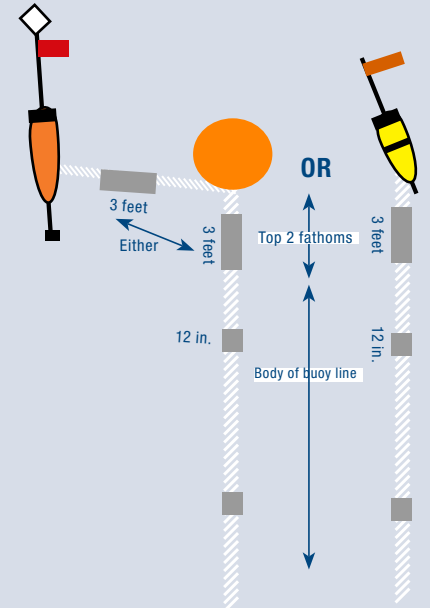
MAINE



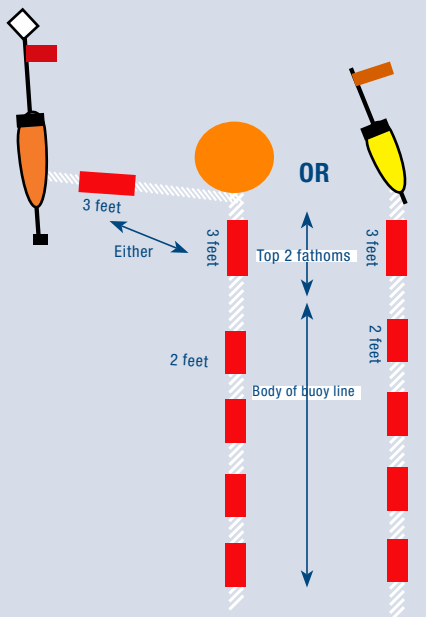
NEW HAMPSHIRE



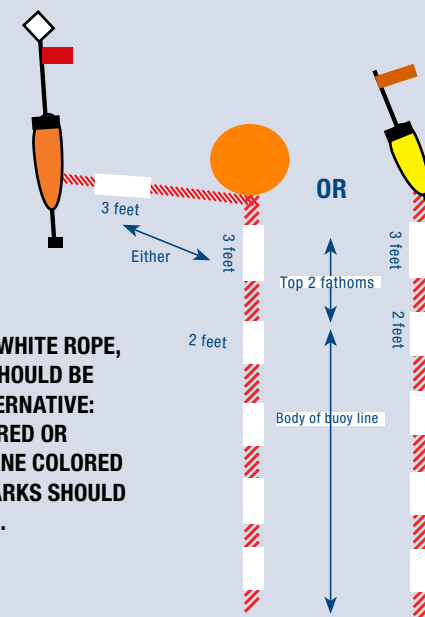
RHODE ISLAND



MASSACHUSETTS



IF USING WHITE ROPE, MARKS SHOULD BE RED. ALTERNATIVE: IF USING RED OR CANDYCANE COLORED ROPE, MARKS SHOULD BE WHITE.



MARKING GEAR

A solid colored rope may be used for state or LMA 3 gear marks, including the solid surface mark.

The solid surface 3-foot mark may be applied with dye, paint, tape, heat-shrink tubing, insertion of a colored rope or braided sleeve, or the line may be marked as approved in writing by the Greater Atlantic Regional Administrator.

Rope with a distinctive colored strand throughout or Candy Cane rope may be used instead of the specific state or LMA 3 gear marks in the body of the buoy line.

For 12-inch federal marks or where state or LMA 3 colored rope is not used, the 12-inch marks may be added using dye, paint, tape, heat-shrink tubing, zip ties; spliced in insertion of a colored rope or braided sleeve or other material, or a thin line may be woven into or through the line; or the line may be marked as approved in writing by the Greater Atlantic Regional Administrator.

NORTHEAST LOBSTER AND JONAH CRAB WEAK INSERTIONS

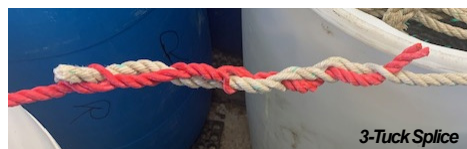
The 2021 rule removes the requirement for weak link at buoys* and other surface system flotation devices, and adds requirements for weak rope or insertions (1700-pound breaking strength) within the buoy line. Weak rope can also be used on any buoy line down to the lowest point where a weak insert is required. Use of 100 percent weak rope is also allowed in place of inserts.

*Weak links at the buoy may still be used.

AREA	WEAK INSERTION REQUIREMENTS
ME Exempt State Waters	See state regulations
ME Exempt Line–3 nm	1 weak insert 50% down the line
NH State Waters	
MA State Waters	Weak inserts every 60 feet OR full weak line in the top 75% of line
RI State Waters	
LMA 2	
ME Zone A West, B, C, D, E; Federal Waters 3–12 nm	2 weak inserts at 25% and 50% down the line
MA and NH LMA 1, OCC; Federal Waters 3–12 nm	
ME Zone A East, F, and G; Federal Waters 3–12 nm	1 weak insert 33% down the line.
LMA 1 & OCC beyond 12 nm	
LMA 3	Top 75% of one buoy line is full weak line. Bottom 25% can be higher strength.

EXAMPLES OF WEAK INSERT RIGGING METHODS

USED WITH WEAK ROPE



APPROVED MANUFACTURED WEAK ROPE

Rocky Mount Red (3/8" diameter), Candy Cane (3/8" diameter), and Candy Cane (3/8" diameter) v01/22

Neocorp 3/8" diameter polyester rope (1021)

Seaway 5/16" #10 Braid

NOTE: ALL WEAK ROPE INSERTS MUST BE AT LEAST 3 FEET IN LENGTH.

Approved 3-strand ropes may be used as weak rope or inserts. Approved braided rope may only be used as weak rope.

The red rope in these pictures is weak rope manufactured by Rocky Mount Cord Company.

NO WEAK ROPE USED



This red sleeve is manufactured by Novabraid.



In-line links for 3/8" rope are available from Brooks Trap Mill and Seaside.

Check www.fisheries.noaa.gov/NE-approved-weak for more approved ropes and weak inserts, and their availability.

SECTION 2

REQUIREMENTS FOR NORTHEAST TRAP/POT FISHERIES (OTHER THAN LOBSTER AND JONAH CRAB)

Which management areas apply to you?	30
Management Area Summary	31
Restricted Areas	32
Weak Inserts and Gear Marking Summary	33
Requirements by Management Areas	34
Northern Inshore State Trap/Pot Waters	35
Massachusetts Restricted Area	38
Stellwagen Bank/Jeffreys Ledge Restricted Area	40
Great South Channel Restricted Area	42
Northern Nearshore Waters (Northeast)	44
Southern Nearshore Waters (Northeast)	46
Offshore Trap/Pot Waters (Northeast)	48
Jeffreys Ledge Gear Marking Area	50
Jordan Basin Gear Marking Area	51

Please Note:

The Universal Gear Requirements on pages 4-5 of this guide apply to ALL trap/pot fisheries.

NORTHEAST TRAP/POT MANAGEMENT AREA SUMMARY

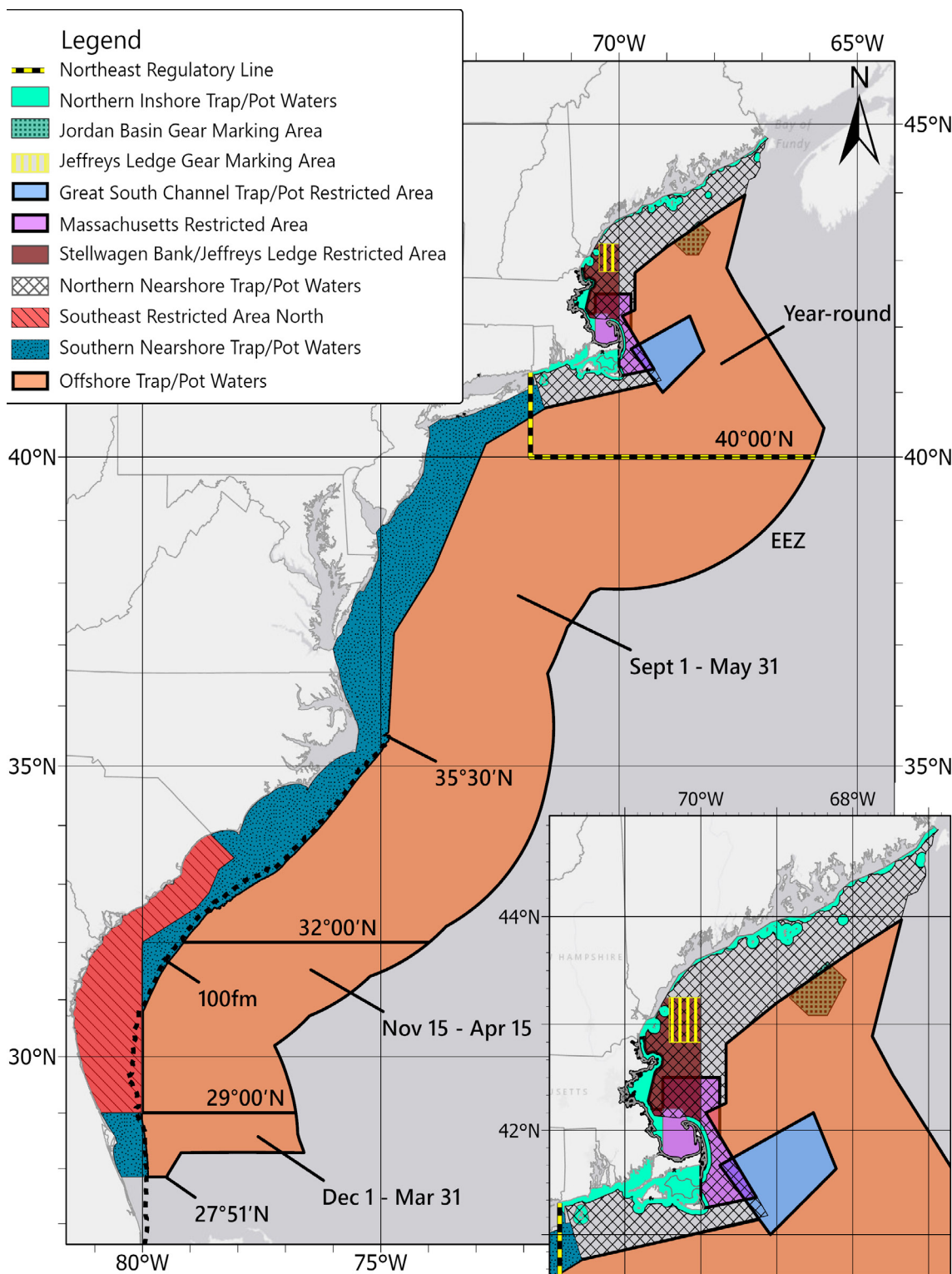
FOR FISHERIES OTHER THAN LOBSTER AND JONAH CRAB

This section of this guide provides overviews of the requirements for each ALWTRP management area located from Maine through Connecticut affecting trap/pot fisheries other than lobster and Jonah crab fisheries. Several management areas may overlap state waters. Please see the outline below of management areas that may be in effect in your area. It is your responsibility to make sure you are compliant with requirements applicable to your fishery. If you have questions about requirements for your area, please contact us or your state's marine fishery office.

WHICH MANAGEMENT AREAS APPLY TO YOU?

STATE WATERS	MANAGEMENT AREAS	PAGE OF THIS GUIDE
MAINE	Northern Inshore Trap/Pot Waters	32
	Stellwagen Bank/Jeffreys Ledge Restricted Area	36
	Northern Nearshore Trap/Pot Waters	40
	ME Exempted Areas (includes additional gear marking)	49
NEW HAMPSHIRE	Northern Inshore Trap/Pot Waters	32
	Stellwagen Bank/Jeffreys Ledge Restricted Area	36
	Northern Nearshore Trap/Pot Waters	40
	NH Exempted Areas	52
MASSACHUSETTS	Northern Inshore Trap/Pot Waters	32
	Massachusetts Restricted Area	34
	Stellwagen Bank/Jeffreys Ledge Restricted Area	36
	Great South Channel Restricted Area	38
	Northern Nearshore Trap/Pot Waters	40
	MA Exempted Areas (includes additional gear marking)	54
RHODE ISLAND	Northern Inshore Trap/Pot Waters	32
	Northern Nearshore Trap/Pot Waters	40
	Southern Nearshore Trap/Pot Waters	42
	RI Exempted Areas (includes additional gear marking)	56
CONNECTICUT	Northern Inshore Trap/Pot Waters	32
	Northern Nearshore Trap/Pot Waters	40
	Southern Nearshore Trap/Pot Waters	42
FEDERAL WATERS	Offshore Trap/Pot Waters	44
	Stellwagen Bank/Jeffreys Ledge Restricted Area	36
	Great South Channel Restricted Area	38
	Northern Nearshore Trap/Pot Waters	40
	Southern Nearshore Trap/Pot Waters	42
	Jeffreys Ledge Gear Marking Area	46
	Jordan Basin Gear Marking Area	48

NORTHEAST TRAP/POT MANAGEMENT AREAS FOR FISHERIES OTHER THAN LOBSTER AND JONAH CRAB



NORTHEAST TRAP/POT RESTRICTED AREAS

AFFECTING ALL NORTHEAST TAP/POT FISHERIES

THE FOLLOWING AREAS ARE CLOSED TO ALL TRAP/POT FISHING

MASSACHUSETTS RESTRICTED AREA (INCLUDING NEW NORTH AREA)

FEBRUARY 1-APRIL 30

COORDINATES:

Longitude	Latitude
-70° 48.98' W	42° 52.32' N
-70° 43.94' W	42° 52.58' N
-70° 38.69' W	42° 12.00' N
-70° 30.00' W	42° 12.00' N
-70° 30.00' W	42° 30.00' N
-69° 45.00' W	42° 30.00' N
-69° 45.00' W	41° 56.50' N
-69° 16.00' W	41° 21.50' N
-69° 57.90' W	41° 15.30' N
-70° 00.00' W	41° 20.30' N
-70° 00.00' W	41° 40.20' N

STATE EXTENSION:

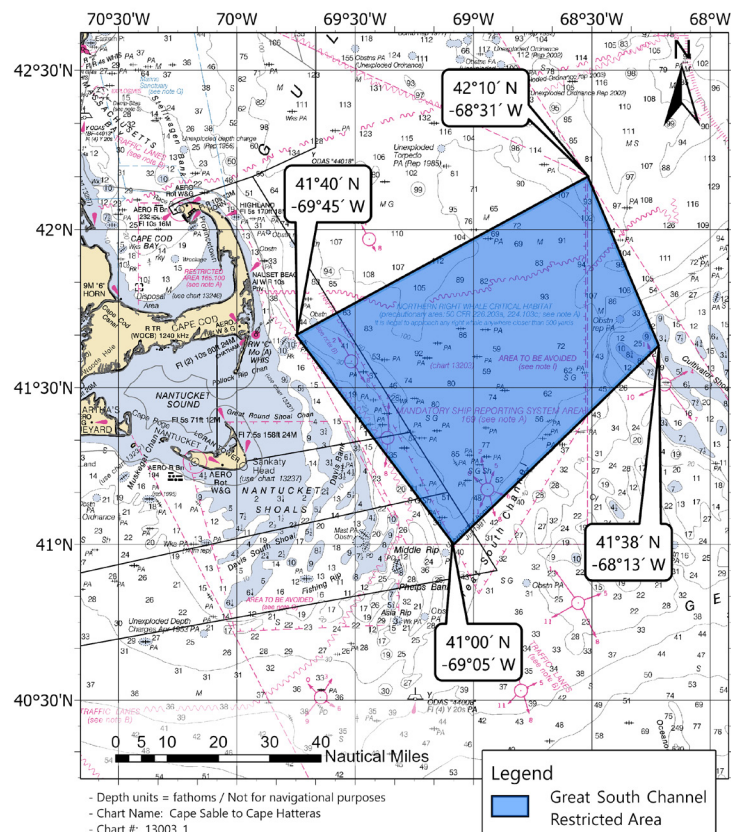
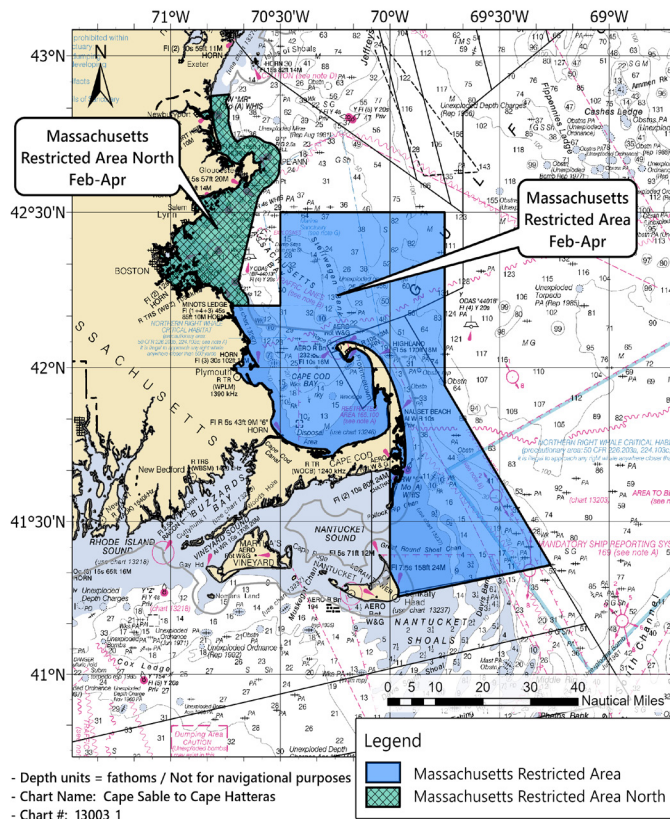
Massachusetts state regulations extend the closure in state waters to May 15, with potential extension until May 31, if whales remain in the area. More information can be found at www.mass.gov/orgs/division-of-marine-fisheries.

GREAT SOUTH CHANNEL RESTRICTED AREA

APRIL 1-JUNE 30

COORDINATES:

Longitude	Latitude
-69° 45.00' W	41° 40.00' N
-69° 05.00' W	41° 00.00' N
-68° 13.00' W	41° 38.00' N
-68° 31.00' W	42° 10.00' N



TRAP/POT WEAK INSERTS FOR SURFACE SYSTEMS

All buoys, flotation devices and/or weights must be attached to the buoy line with a weak link having a certain breaking strength as defined for each management area on the following pages.

Weak links must be chosen from the list of NMFS-approved gear, which includes off the shelf weak links and hog ring. Weak links must be designed in such a way that the bitter end of the buoy line is clean and free of any knots when the weak link breaks.

TRAP/POT GEAR MARKING REQUIREMENTS

For universal trap/pot gear marking requirements, see page 6.

Buoy lines are to be marked with three 12-inch colored marks: one at the top of the buoy line, one midway along the buoy line, and one at the bottom of the buoy line.

If the mark consists of two colors, EACH COLOR mark may be 6 inches for a TOTAL MARK of 12 inches.

Check each specific management area page for gear marking color requirements.



Example of line gear marking.

GEAR MARKING BY NORTHEAST TRAP/POT MANAGEMENT AREAS

FOR FISHERIES OTHER THAN LOBSTER AND JONAH CRAB

GEAR MARKING COLOR	APPLICABLE TRAP/POT MANAGEMENT AREA
RED	Massachusetts Restricted Area Northern Nearshore Trap/Pot Waters Northern Inshore State Trap/Pot Waters Stellwagen Bank/Jeffreys Ledge Restricted Area Great South Channel Restricted Area overlapping Lobster Management Area (LMA) 2 and/or the Outer Cape (OC) LMA.
ORANGE	Southern Nearshore Trap/Pot Waters
BLACK	Offshore Trap/Pot Waters Great South Channel Restricted Area overlapping with the LMA 2/3 Overlap and/or LMA 3
BLUE & ORANGE	Southeast Restricted Area North (State Waters)
GREEN & ORANGE	Southeast Restricted Area North (Federal Waters)
RED & BLUE	RI state waters (singles) exempt from min. trap per trawl
RED & WHITE	MA state waters in LMA 1 (singles) exempt from min. trap per trawl
RED & BLACK	MA state waters in LMA 2 (singles) exempt from min. trap per trawl
RED & YELLOW	MA waters in Outer Cape (singles) exempt from min. trap per trawl
RED & PURPLE	Jordan Basin (Trap/Pot) overlapping LMA 1
BLACK & PURPLE	Jordan Basin (Trap/Pot) overlapping Offshore Trap/Pot Waters
RED & ORANGE	Isle of Shoals group, Maine
RED & GREEN	Jeffreys Ledge (Trap/Pot)

NORTHEAST TRAP/POT MANAGEMENT AREAS

FOR FISHERIES OTHER THAN LOBSTER AND JONAH CRAB

NORTHERN INSHORE STATE TRAP/POT WATERS

AREA DESCRIPTION

Includes the state waters of Rhode Island, Massachusetts, New Hampshire, and Maine, with the exception of the Massachusetts Restricted Area and the exempted waters (see Section 4 of this Guide).

SEASONAL RESTRICTIONS

YEAR-ROUND:

For all trap/pot gear marking and weak link requirements, see pages 6 and 30.

In addition to those requirements, trap/pot gear in this area must also follow these requirements:

- Gear marks must be RED or the following color combination in the minimum trap-per-trawl exemption areas.
 - Single traps in exempted Massachusetts state waters in LMA 1: RED & WHITE
 - Single traps in exempted Massachusetts state waters in LMA 2: RED & BLACK
 - Single traps in exempted Massachusetts state waters in Outer Cape: RED & YELLOW
- Weak links \leq 600 lbs breaking strength

MINIMUM NUMBER OF TRAPS PER TRAWL

AREA OVERLAPPING

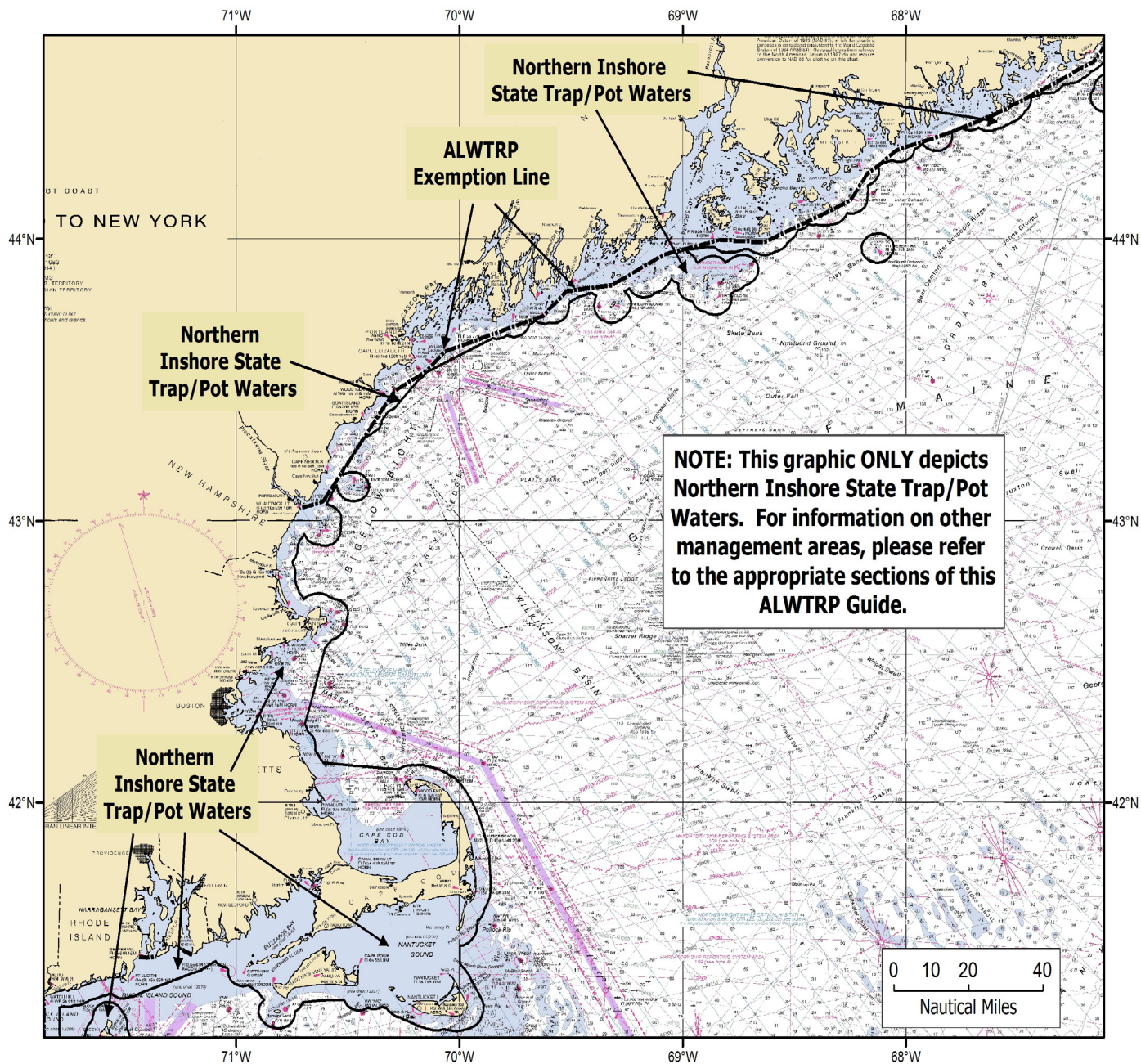
MINIMUM NUMBER OF TRAPS PER TRAWL

ME State and Pocket Waters*	2
MA State Waters	2 or no minimum—see page 37 for exempted MA state waters
NH State Waters	No minimum
LMA1/Outer Cape Overlap (0-3 miles)	No minimum
Outer Cape (0-3 miles)	No minimum
RI State Waters	No minimum

NORTHEAST TRAP/POT MANAGEMENT AREAS

FOR FISHERIES OTHER THAN LOBSTER AND JONAH CRAB

NORTHERN INSHORE STATE TRAP/POT WATERS



This management area overlaps the following additional management areas:

- Massachusetts Restricted Area (page 36)
- Stellwagen Bank/Jeffreys Ledge Restricted Area (page 38)

NORTHEAST TRAP/POT MANAGEMENT AREAS

FOR FISHERIES OTHER THAN LOBSTER AND JONAH CRAB

NORTHERN INSHORE STATE TRAP/POT WATERS

MAINE POCKET WATERS

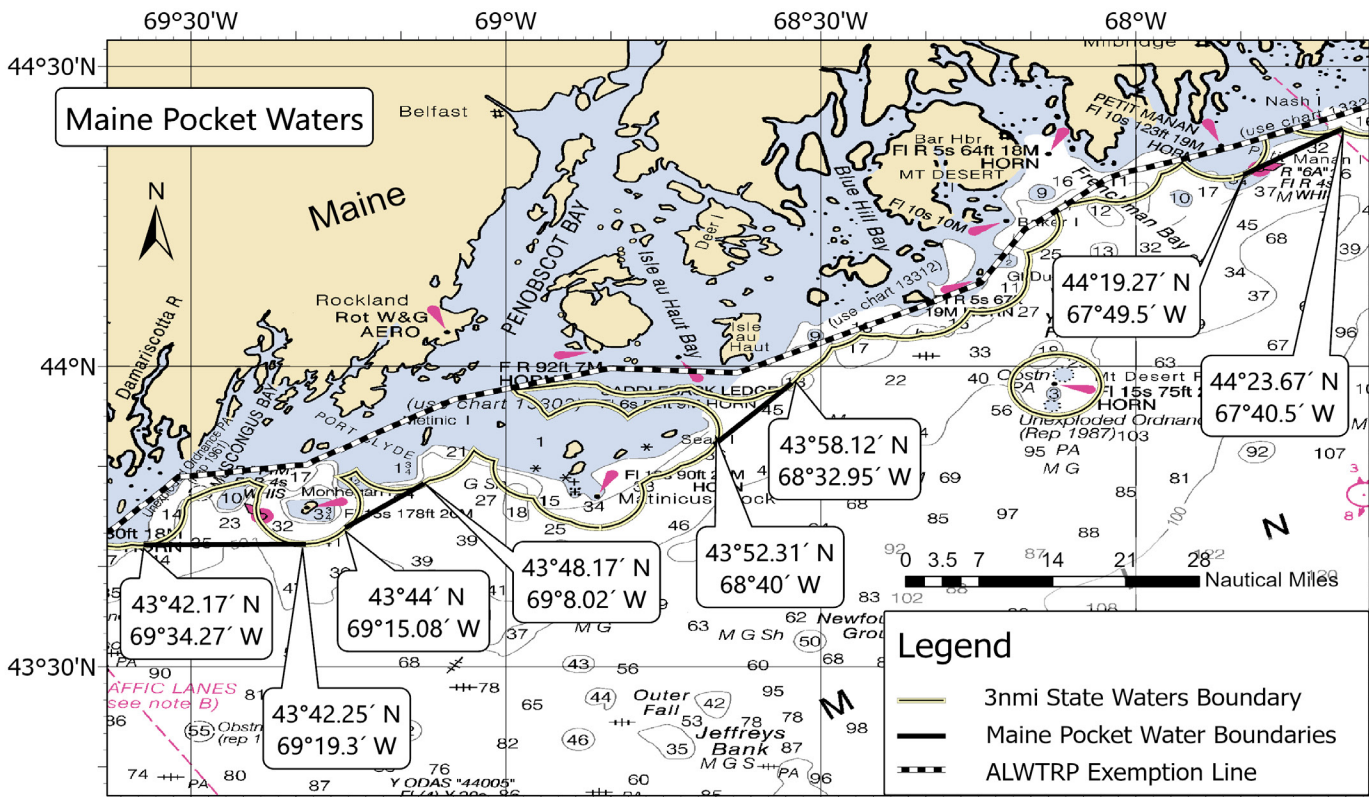
COORDINATES:

West of Monehegan in the area north of the line -69° 34.27' W/43° 42.17' N to -69° 19.3' W/43° 42.25' N

East of Monehegan Island in the area north of the line -69° 15.08' W/43° 44' N to -69° 8.02' W/43° 48.17' N

South of Vinalhaven Island in the area west of the line -68° 40' W/43° 52.31' N to -68° 32.95' W/ 43° 58.12' N

South of Bois Bubert Island in the area northwest of the line -67° 49.5' W/44° 19.27' N to -67° 40.5' W/44° 23.67' N



- Depth units = fathoms / Not for navigational purposes
- Chart Name: Cape Sable to Cape Hatteras
- Chart #: 13003_1

NORTHEAST TRAP/POT MANAGEMENT AREAS

FOR FISHERIES OTHER THAN LOBSTER AND JONAH CRAB

MASSACHUSETTS RESTRICTED AREA (INCLUDING NORTH EXTENSION)

SEASONAL RESTRICTIONS

FEBRUARY 1–APRIL 30

Closed to ALL trap/pot fishing

STATE CLOSURE EXTENSION:

Massachusetts state regulations extend the closure in state waters to May 15, with potential extension until May 31, if whales remain in the area. More information can be found at www.mass.gov/orgs/division-of-marine-fisheries.

MAY 1–JANUARY 31

For all trap/pot gear marking and weak link requirements, see pages 6 and 30.

In addition to those requirements, trap/pot gear in this area must also follow these requirements:

Gear marking—RED or the following colors for minimum trap per trawl exemption areas

- Single traps in exempted MA State waters in LMA 1: RED & WHITE
- Single traps in exempted MA state waters in Outer Cape: RED & YELLOW

Weak links ≤ 600 lbs breaking strength

Sinking groundlines

Minimum number of traps per trawl restrictions (see below)

AREA DESCRIPTION

COORDINATES:

Longitude	Latitude
-70° 48.98' W	42° 52.32' N
-70° 43.94' W	42° 52.58' N
-70° 38.69' W	42° 12.00' N
-70° 30.00' W	42° 12.00' N
-70° 30.00' W	42° 30.00' N
-69° 45.00' W	42° 30.00' N
-69° 45.00' W	41° 56.50' N
-69° 16.00' W	41° 21.50' N
-69° 57.90' W	41° 15.30' N
-70° 00.00' W	41° 20.30' N
-70° 00.00' W	41° 40.20' N

MINIMUM NUMBER OF TRAPS PER TRAWL

AREA OVERLAPPING

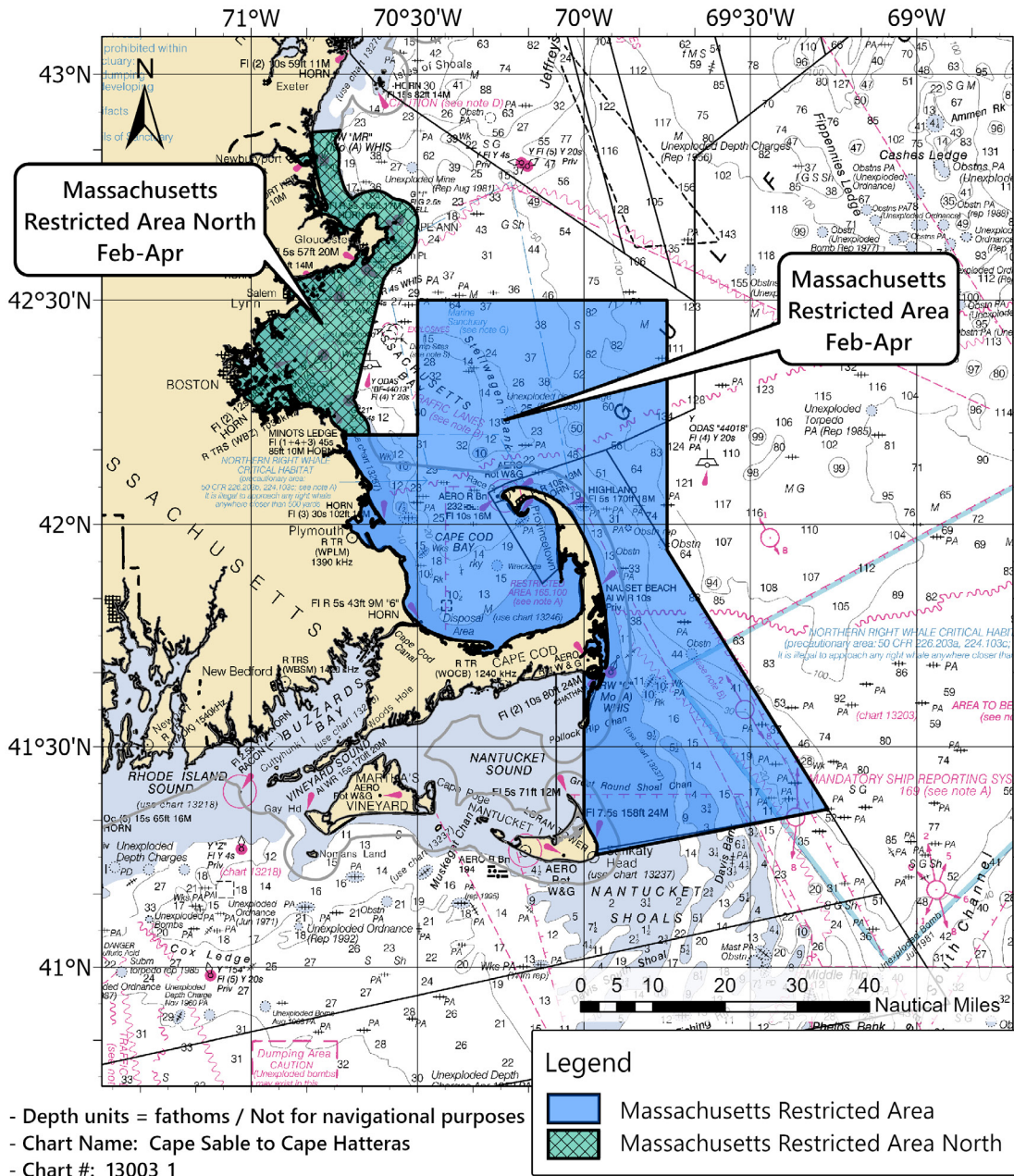
MA State Waters 15 (Mar 1-Oct 31)
LMA 1 (3-12 miles)
LMA 1/Outer Cape Overlap (0-3 miles)
Outer Cape (0-3 miles)
Outer Cape (3-12 miles)

MINIMUM NUMBER OF TRAPS PER TRAWL

2 or no minimum—see page 37 for exempted MA state waters
10
No minimum
No minimum
10

NORTHEAST TRAP/POT MANAGEMENT AREAS FOR FISHERIES OTHER THAN LOBSTER AND JONAH CRAB

MASSACHUSETTS RESTRICTED AREA (INCLUDING NORTH EXTENSION)



This management area overlaps the following additional management areas:

- Northern Inshore State Trap/Pot Waters (page 35)
- Stellwagen Bank/Jeffreys Ledge Restricted Area (page 40)
- Great South Channel Restricted Area (page 42)
- Northern Nearshore Trap/Pot Waters (page 44)

NORTHEAST TRAP/POT MANAGEMENT AREAS

FOR FISHERIES OTHER THAN LOBSTER AND JONAH CRAB

STELLWAGEN BANK/JEFFREYS LEDGE RESTRICTED AREA

AREA DESCRIPTION

The Stellwagen Bank/Jeffreys Ledge Restricted Area includes all federal waters of the Gulf of Maine except those designated as the Massachusetts Restricted Area) that lie south of 43°15'N and west of 70°00'W.

SEASONAL RESTRICTIONS

YEAR-ROUND:

For all trap/pot gear marking and weak link requirements, see pages 6 and 30.

In addition to those requirements, trap/pot gear in this area must also follow these requirements:

Gear marking: RED or RED & GREEN if overlapping Jeffreys Ledge Gear Marking Area (page 30) or the following colors for minimum trap per trawl exemption areas

Single traps in exempted MA State waters in LMA1: RED & WHITE

- Single traps in exempted MA state waters in LMA 2: RED & BLACK
- Single traps in exempted MA state waters in Outer Cape: RED & YELLOW

Weak links \leq 600 lbs breaking strength

Sinking groundlines

Minimum number of traps per trawl restrictions (see below)

MINIMUM NUMBER OF TRAPS PER TRAWL

AREA OVERLAPPING	MINIMUM NUMBER OF TRAPS PER TRAWL	
ME Zones F-G (12+ miles)	15 (Mar 1-Oct 31)	20 (Nov 1-Feb 28/29)
LMA 1 (3-12 miles)	10	
LMA 1 (12+ miles)	20	
Outer Cape (3-12 miles)	10	

NORTHEAST TRAP/POT MANAGEMENT AREAS

FOR FISHERIES OTHER THAN LOBSTER AND JONAH CRAB

GREAT SOUTH CHANNEL RESTRICTED AREA

AREA DESCRIPTION

The Great South Channel Restricted Trap/Pot Area includes the area bounded by:

Longitude	Latitude
-69° 45.00' W	41° 40.00' N
-69° 05.00' W	41° 00.00' N
-68° 13.00' W	41° 38.00' N
-68° 31.00' W	42° 10.00' N

SEASONAL RESTRICTIONS

APRIL 1–JUNE 30

CLOSED to ALL trap/pot fishing

JULY 1–MARCH 31

For all trap/pot gear marking and weak link requirements, see pages 6 and 30.

In addition to those requirements, trap/pot gear in this area must also follow these requirements:

Gear Marking: RED (areas overlapping LMA 2 and/or Outer Cape LMA), BLACK (areas overlapping LMA 2/3 Overlap and/or LMA3)

Weak links no greater than 600 lb in area overlap with LMA 2 and/or Outer Cape, and no greater than 1,500 lb. in areas that overlap with LMA 2/3 and/or LMA3

Sinking groundlines

Minimum number of traps per trawl restrictions (see below)

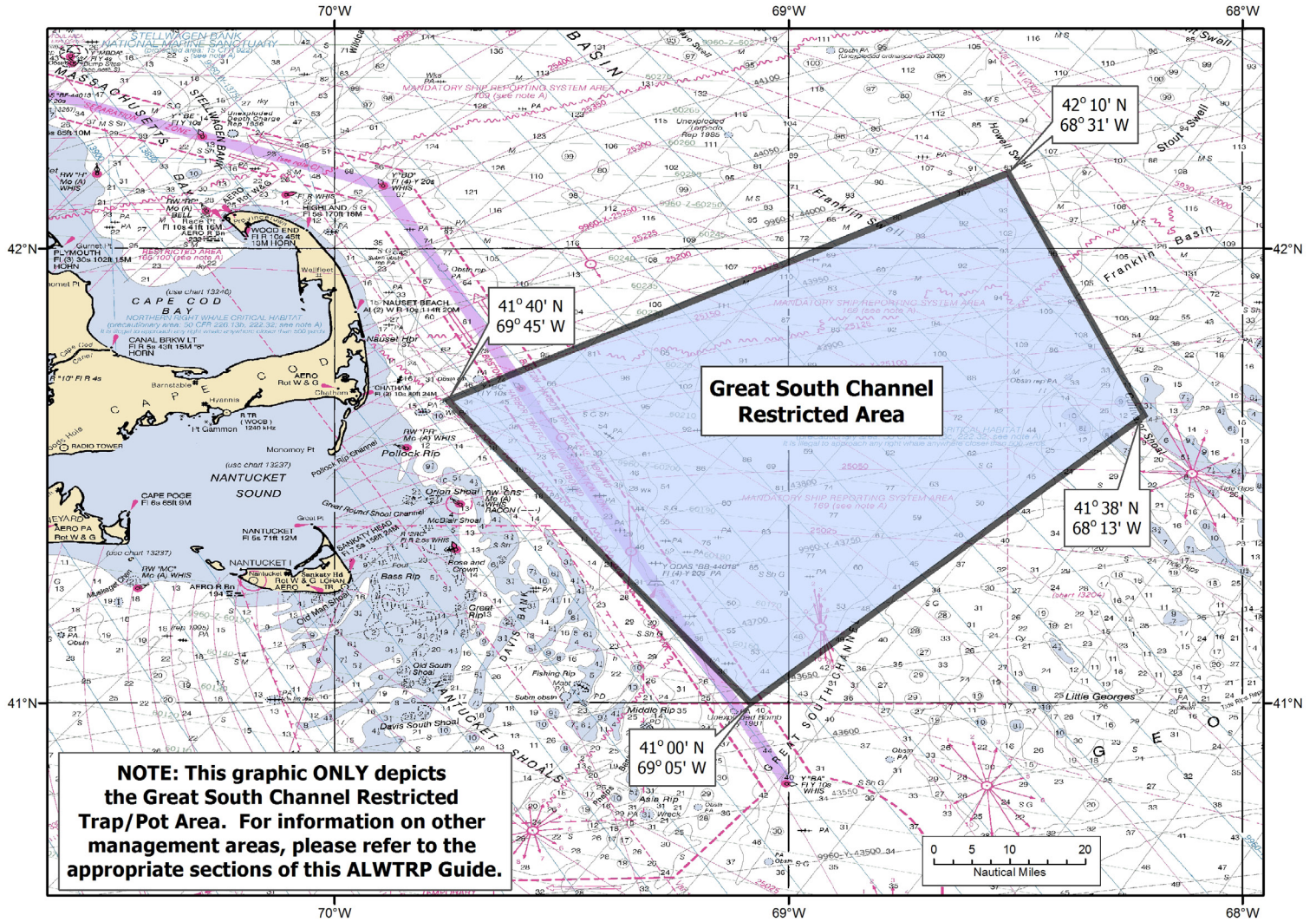
MINIMUM NUMBER OF TRAPS PER TRAWL

AREA OVERLAPPING	MINIMUM NUMBER OF TRAPS PER TRAWL
Outer Cape (3-12 miles)	10
Outer Cape (12+ miles)	20
LMA 2 (12 + miles)	15
LMA 2/3 Overlap (12+ miles)	20
LMA 3 (12+ miles)	20

NORTHEAST TRAP/POT MANAGEMENT AREAS

FOR FISHERIES OTHER THAN LOBSTER AND JONAH CRAB

GREAT SOUTH CHANNEL RESTRICTED AREA



This management area overlaps the following additional management areas:

- Massachusetts Restricted Area (page 38)
- Northern Nearshore Trap/Pot Waters (page 44)

NORTHEAST TRAP/POT MANAGEMENT AREAS

FOR FISHERIES OTHER THAN LOBSTER AND JONAH CRAB

NORTHERN NEARSHORE WATERS (NORTHEAST)

AREA DESCRIPTION

Northern Nearshore Lobster Waters includes all federal waters of LMA 1, LMA 2, and the Outer Cape Lobster Management Area (as defined in the American lobster fishery regulations at 50 CFR 697.18), with the exception of the Great South Channel Restricted Trap/Pot Area, Massachusetts Bay Restricted Area, Stellwagen Bank/Jeffreys Ledge Restricted Area, and exempted waters (see Section 4 of this Guide).

SEASONAL RESTRICTIONS

YEAR-ROUND

For all trap/pot gear marking and weak link requirements, see pages 6 and 30.

In addition to those requirements, trap/pot gear in this area must also follow these requirements:

Gear marking: RED or RED & GREEN if overlapping Jeffreys Ledge Gear Marking Area (page 30) or RED & PURPLE if overlapping Jordan Basin Gear Marking Area

Weak links \leq 600lbs breaking strength

Sinking groundlines

Minimum number of traps per trawl restrictions (see below)

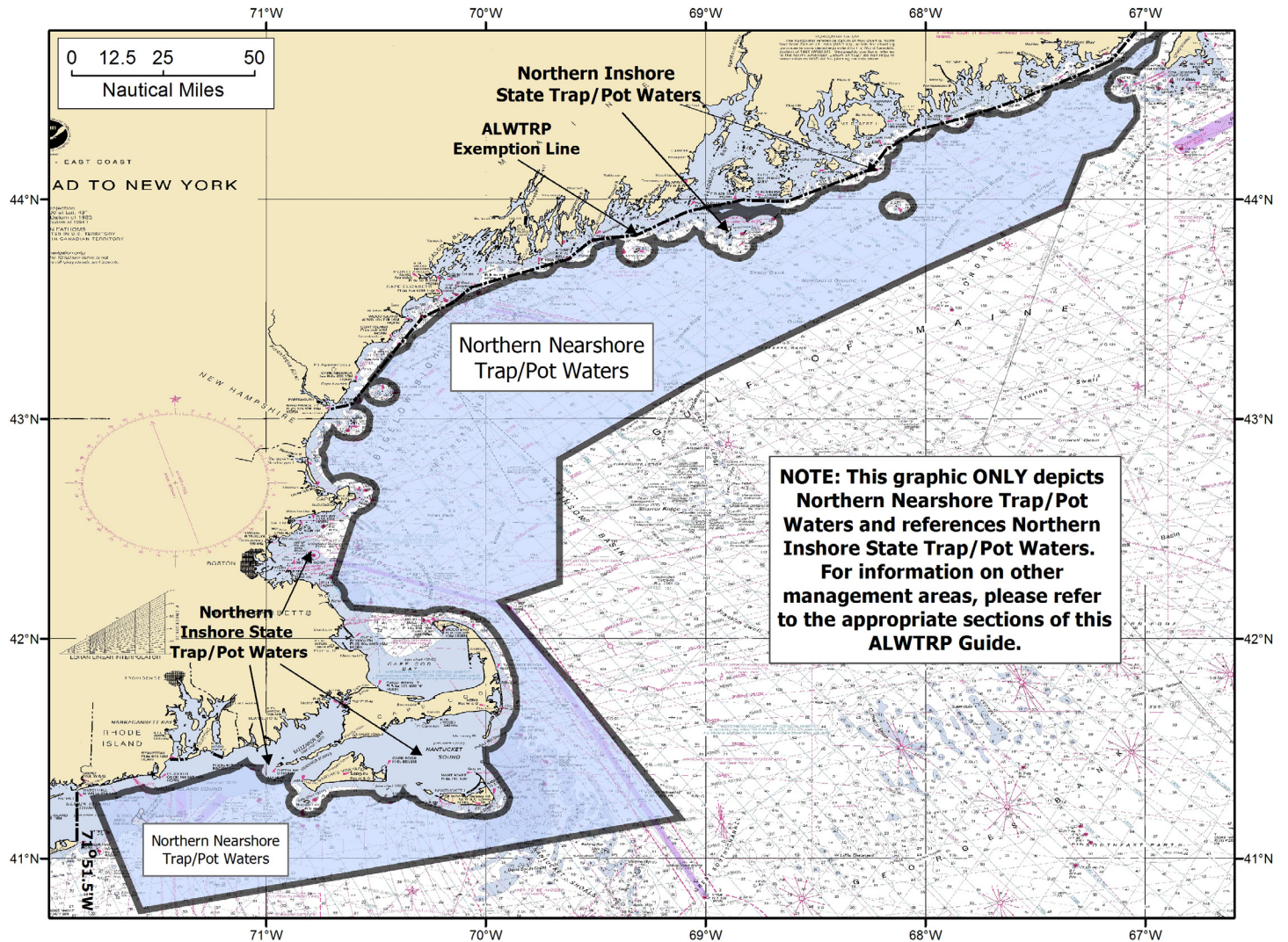
MINIMUM NUMBER OF TRAPS PER TRAWL

AREA OVERLAPPING	MINIMUM NUMBER OF TRAPS PER TRAWL	
ME Zones A-G (3-6 miles)*	3	
ME Zones A-C (6-12 miles)*	5	
ME Zones D-G (6-12 miles)*	10	
ME Zones A-E (12+ miles)	15	
ME Zones F-G (12+ miles)	15 (Mar 1-Oct 31)	20 (Nov 1-Feb 28/29)
LMA 1 (3-12 miles)	10	
LMA 1 (12+ miles)	20	
Outer Cape (3-12 miles)	10	
Outer Cape (12+ miles)	20	
LMA 2 (3-12 miles)	10	
LMA 2 (12 + miles)	15	

NORTHEAST TRAP/POT MANAGEMENT AREAS

FOR FISHERIES OTHER THAN LOBSTER AND JONAH CRAB

NORTHERN NEARSHORE WATERS (NORTHEAST)



This management area overlaps the following additional management areas:

- Massachusetts Restricted Area (page 38)
- Stellwagen Bank/Jeffreys Ledge Restricted Area (page 40)
- Great South Channel Restricted Area (page 42)
- Northern Nearshore Trap/Pot Waters (page 44)
- Jeffreys Ledge Gear Marking Area (page 50)
- Jordan Basin Gear Marking Area (page 51)

NORTHEAST TRAP/POT MANAGEMENT AREAS

FOR FISHERIES OTHER THAN LOBSTER AND JONAH CRAB

OFFSHORE TRAP/POT WATERS (NORTHEAST)

AREA DESCRIPTION

Offshore Trap/Pot Waters includes all federal waters of LMA 3 (including the areas known as the Area 2/3 Overlap and 3/5 Overlap, as defined in the American lobster fishery regulations found at 50 CFR 697.18), with the exception of the Great South Channel Restricted Trap/Pot Area, and extending south along the 100 fathom contour line from 35°30' N. lat. south to 27°51' N. lat., and east to the eastern edge of the EEZ.

Southern Nearshore Trap/Pot Waters includes all state and federal waters which fall within EEZ Nearshore.

SEASONAL RESTRICTIONS

YEAR-ROUND

For all trap/pot gear marking and weak link requirements, see pages 6 and 30.

In addition to those requirements, trap/pot gear in this area must also follow these requirements:

Gear marking: BLACK or BLACK & PURPLE if overlapping Jordan Basin Gear Marking Area

Weak links \leq 1500 lbs in offshore, 2,000 lbs if red crab trap/pot

Sinking groundlines

Minimum number of traps per trawl restrictions (see be)

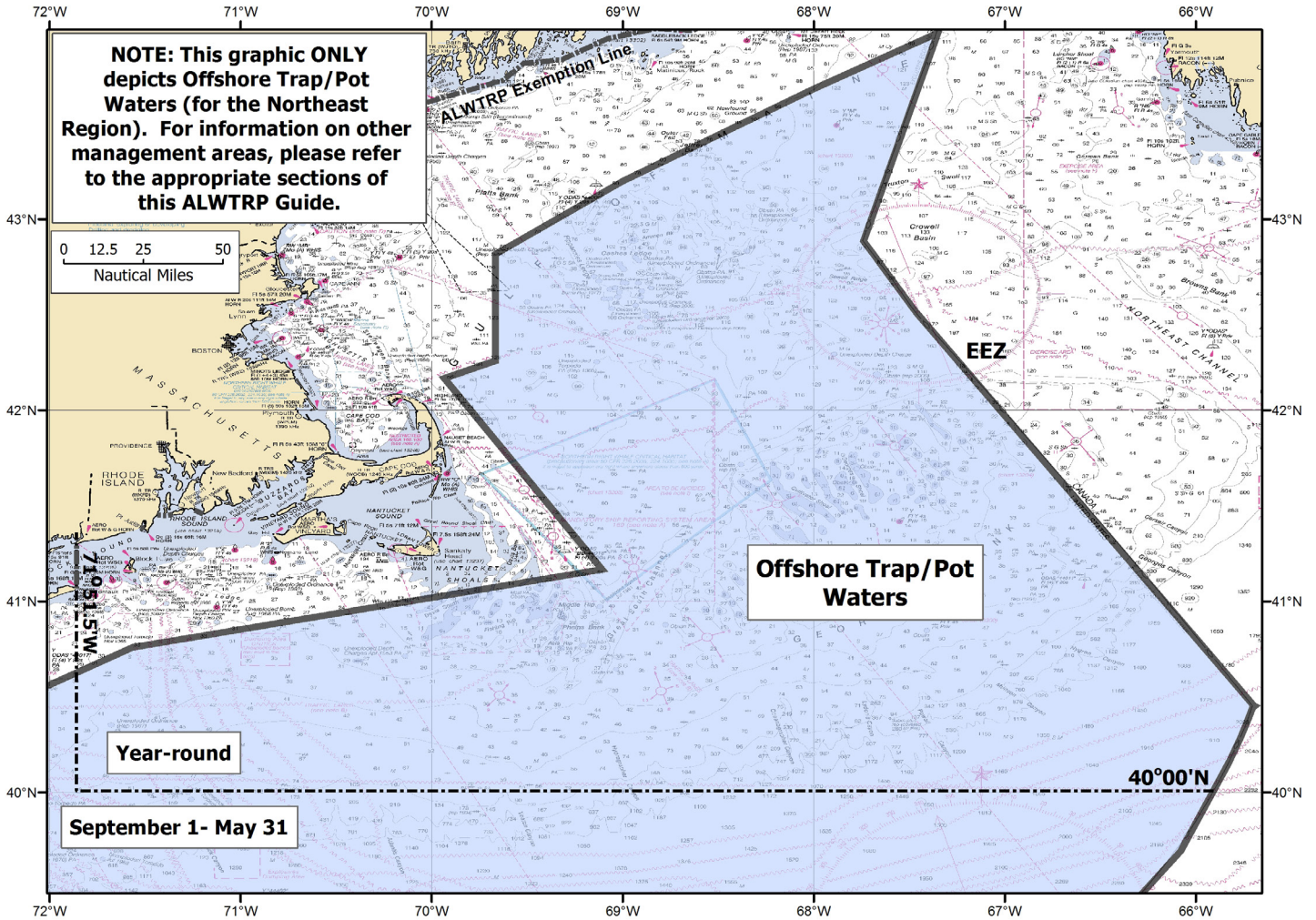
MINIMUM NUMBER OF TRAPS PER TRAWL

AREA OVERLAPPING	MINIMUM NUMBER OF TRAPS PER TRAWL
LMA 2/3 Overlap (12+ miles)	20
LMA 3 (12+ miles) North of 40°	20

NORTHEAST TRAP/POT MANAGEMENT AREAS

FOR FISHERIES OTHER THAN LOBSTER AND JONAH CRAB

OFFSHORE TRAP/POT WATERS (NORTHEAST)



This management area overlaps the following additional management areas:

- Great South Channel Restricted Area (page 42)
- Jeffreys Ledge Gear Marking Area (page 50)
- Jordan Basin Gear Marking Area (page 51)

NORTHEAST TRAP/POT MANAGEMENT AREAS

FOR FISHERIES OTHER THAN LOBSTER AND JONAH CRAB

SOUTHERN NEARSHORE WATERS (NORTHEAST)

AREA DESCRIPTION

Southern Nearshore Trap/Pot Waters includes all state and federal waters that fall within LMA 4, LMA 5, and LMA 6 (as defined in the American lobster fishery regulations in 50 CFR 697.18), and inside the 100 fathom contour line from 35°30' N. lat. south to 27°51' N. lat. and extending inshore to the shoreline or exemption line, with the exception of the exempted waters see Section 4 of this Guide).

A small portion of these waters includes portions of LMA 6 (near the mouth of Long Island Sound), and have year-round requirements, as noted here.

The remaining waters of the Southern Nearshore Trap/Pot Waters management area have seasonal requirements as noted in the Mid-Atlantic and Southeast Region Trap/Pot Regulations Trap/Pot Guides (available on www.fisheries.noaa.gov/alwtrp).

SEASONAL RESTRICTIONS

YEAR-ROUND

For all trap/pot gear marking and weak link requirements, see pages 6 and 30.

In addition to those requirements, trap/pot gear in this area must also follow these requirements:

Gear marking: ORANGE

Weak links \leq 600 lbs breaking strength

Sinking groundlines

Minimum number of traps per trawl restrictions (see below).

Please note: The remaining waters of the Southern Nearshore Trap/Pot Waters management area will have seasonal requirements as noted in the “Mid-Atlantic” and “Southeast Region Trap/Pot Management Areas” descriptions to follow.

MINIMUM NUMBER OF TRAPS PER TRAWL

AREA OVERLAPPING

MINIMUM NUMBER OF TRAPS PER TRAWL

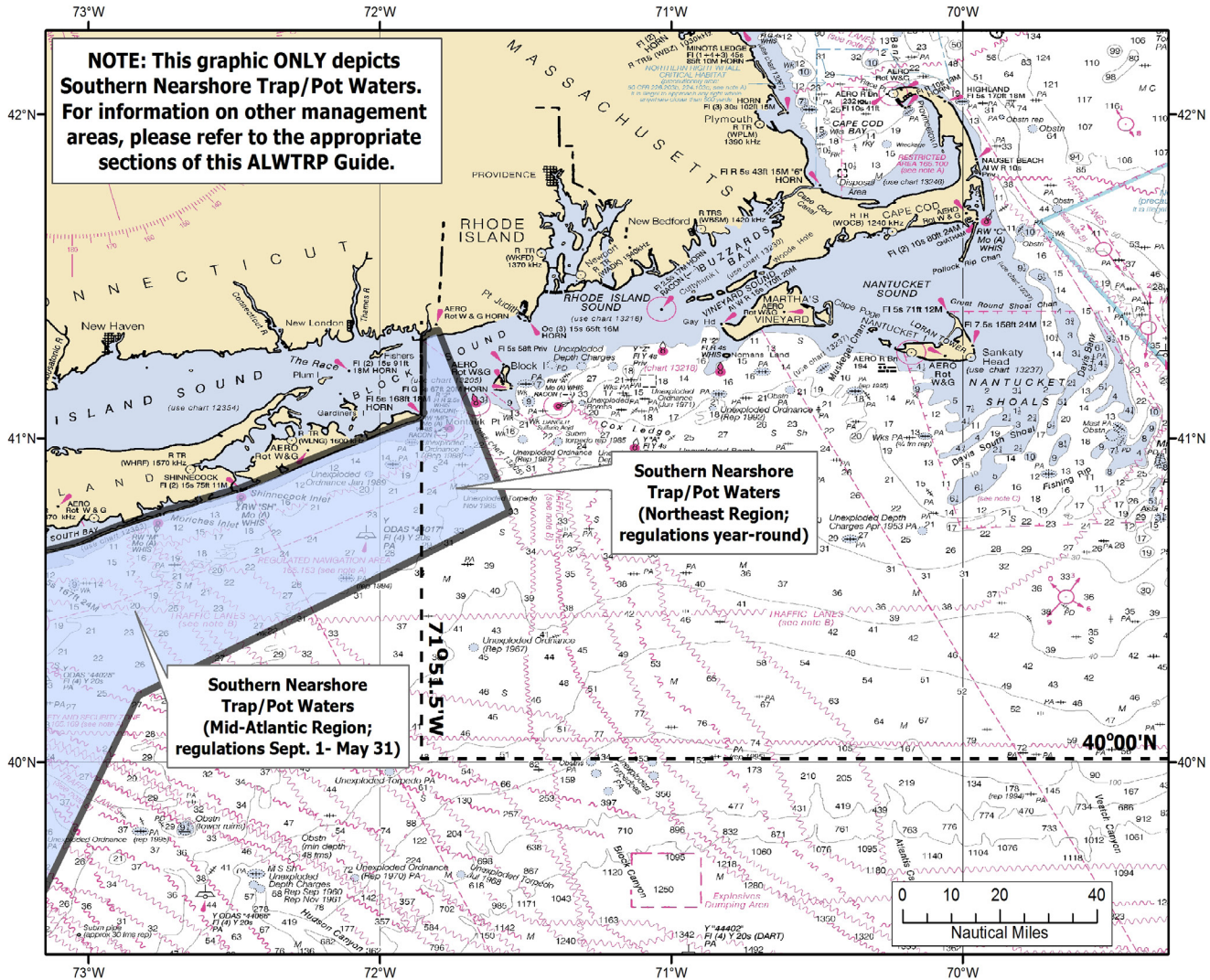
LMA 4,5,6

No minimum

NORTHEAST TRAP/POT MANAGEMENT AREAS

FOR FISHERIES OTHER THAN LOBSTER AND JONAH CRAB

SOUTHERN NEARSHORE WATERS (NORTHEAST)



NORTHEAST TRAP/POT MANAGEMENT AREAS

FOR FISHERIES OTHER THAN LOBSTER AND JONAH CRAB

JEFFREYS LEDGE GEAR MARKING AREA

AREA DESCRIPTION

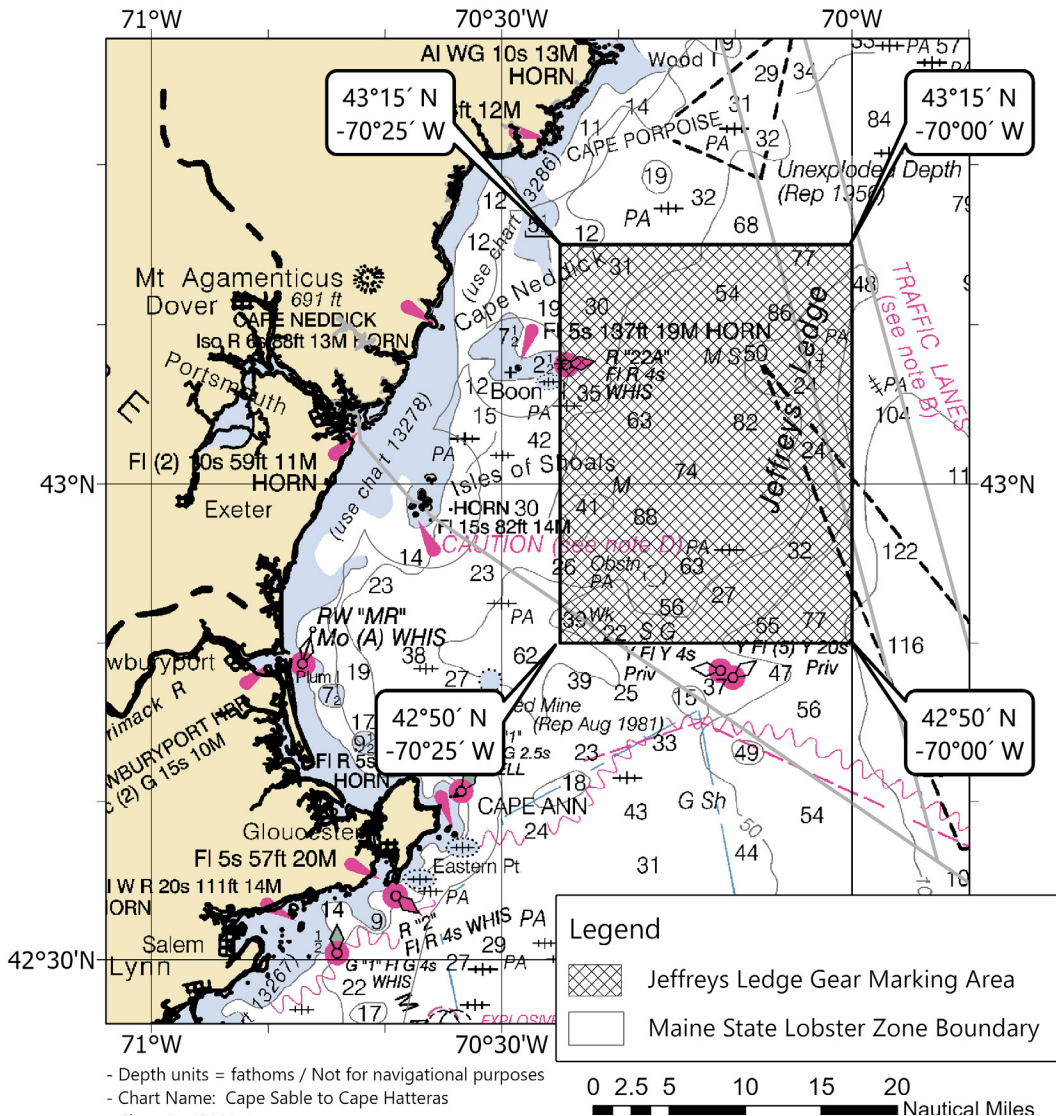
Jeffreys Ledge management area includes the area bounded by:

Longitude	Latitude
-70° 25' W	43° 15' N
-70° 00' W	43° 15' N
-70° 00' W	42° 50' N
-70° 25' W	42° 50' N

SEASONAL RESTRICTIONS

YEAR-ROUND

Gear marking: RED & GREEN



NORTHEAST TRAP/POT MANAGEMENT AREAS

FOR FISHERIES OTHER THAN LOBSTER AND JONAH CRAB

JORDAN BASIN GEAR MARKING AREA

AREA DESCRIPTION

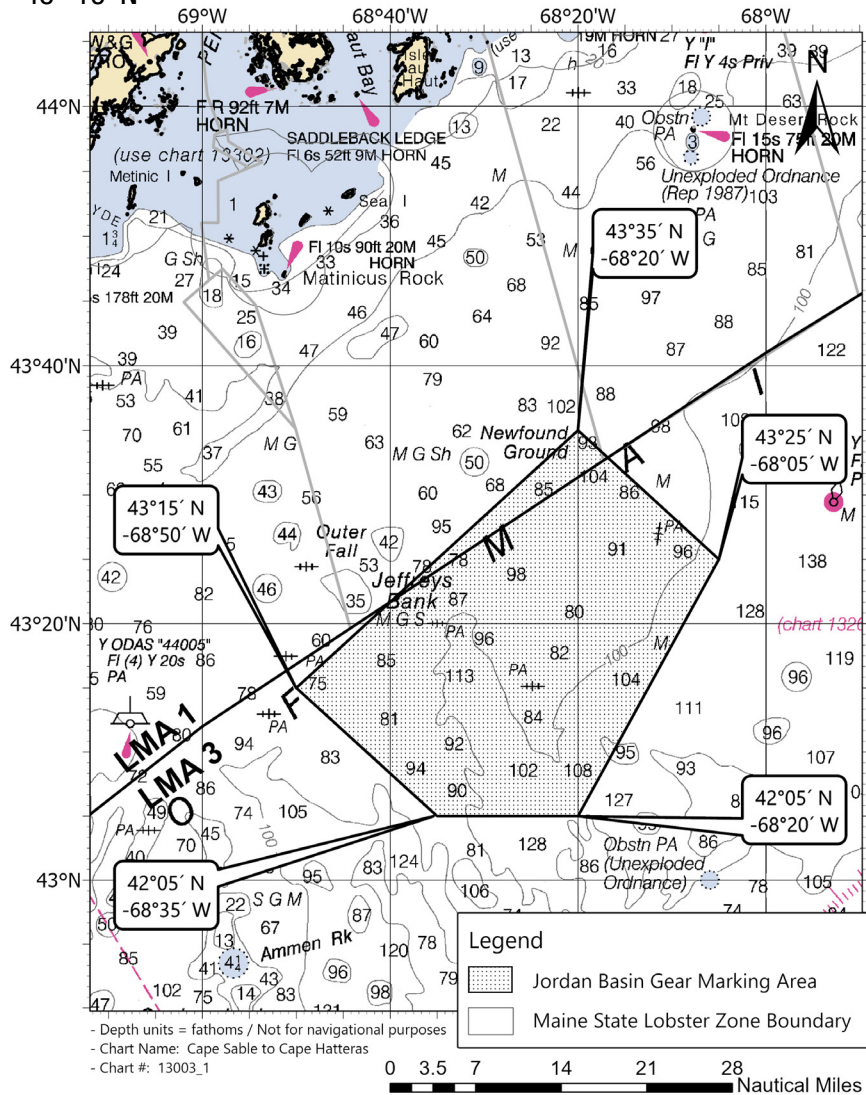
Jordan Basin management area includes the area bounded by:

Longitude	Latitude
-68° 20' W	43° 35' N
-68° 05' W	43° 25' N
-68° 20' W	43° 05' N
-68° 35' W	43° 05' N
-68° 50' W	43° 15' N

SEASONAL RESTRICTIONS

YEAR-ROUND

Gear marking: RED & PURPLE if overlapping LMA 1, BLACK & PURPLE if overlapping Offshore Trap/Pot Waters



SECTION 3

ATLANTIC LARGE WHALE TAKE REDUCTION PLAN EXEMPTION AREAS

The following areas apply to ALL trap/pot fisheries.

Maine	53
• Areas Exempt from the ALWTRP Minimum Trap per Trawl Regulations Only	54
• Areas Exempt from all ALWTRP Regulations	55
New Hampshire	56
• Areas Exempt from the ALWTRP Minimum Trap per Trawl Regulations Only	56
• Areas Exempt from all ALWTRP Regulations	57
Massachusetts	58
• Areas Exempt from the ALWTRP Minimum Trap per Trawl Regulations Only	58
• Areas Exempt from all ALWTRP Regulations	59
Rhode Island	60
• Areas Exempt from the ALWTRP Minimum Trap per Trawl Regulations Only	60
• Areas Exempt from all ALWTRP Regulations	61

Please Note:

The Universal Gear Requirements on pages 4-5 of this guide apply to ALL trap/pot fisheries.

ALWTRP TRAP/POT EXEMPTION AREAS

MAINE MINIMUM TRAP/TRAWL EXEMPTIONS

Waters within 1/4 mile of the following islands in Maine:

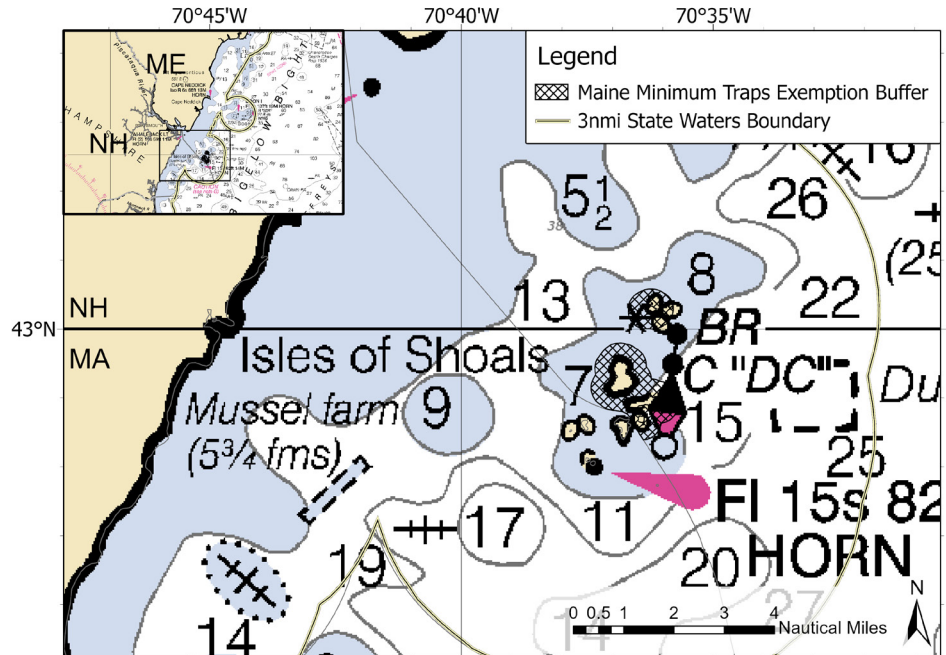
- Monhegan Island
- Matinicus Island
- Ragged Island
- Matinicus Island group—Metinic, Small Green, Large Green, Seal, and Wooden Ball; and
- Isle of Shoals group—Duck, Appledore, Cedar, and Smuttynose

Minimum trap per trawl exempted areas are also required to have area specific gear marking colors for single traps:

- Isle of Shoals single traps—RED & ORANGE

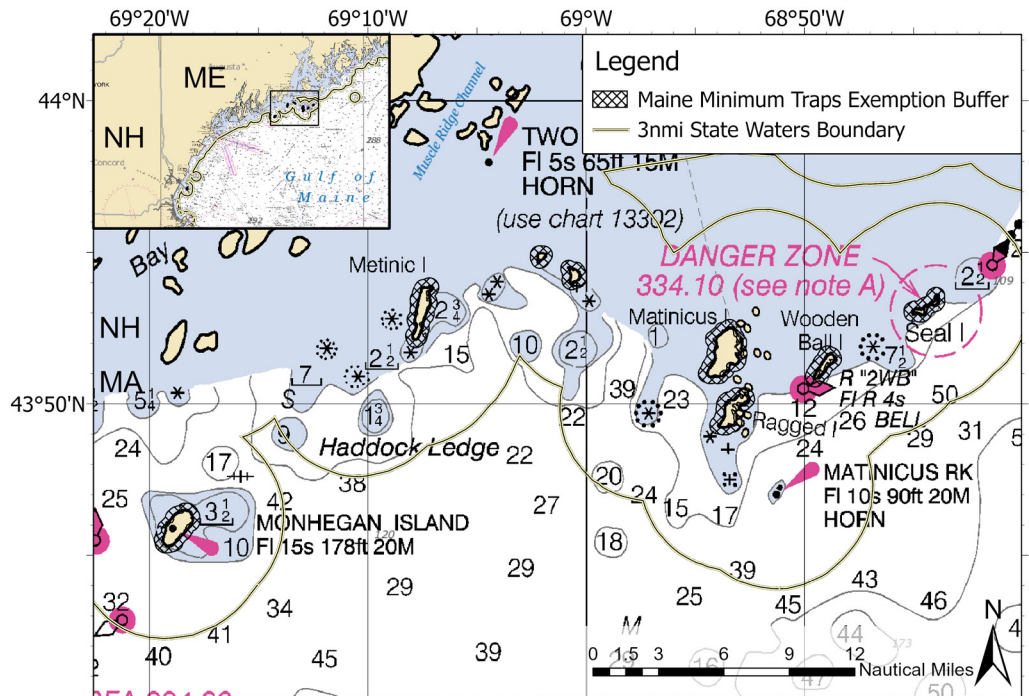
Operations in these waters are expected to comply other Plan requirements.

Maine Waters Exempt from ALWTRP Minimum Trap Per Trawl Requirements



- Depth units = fathoms / Not for navigational purposes
 - Chart Name: West Quoddy Head to New York
 - Chart #: 13006_1

Maine Waters Exempt from ALWTRP Minimum Trap Per Trawl Requirements



- Depth units = fathoms / Not for navigational purposes
 - Chart Name: West Quoddy Head to New York
 - Chart #: 13006_1

ALWTRP TRAP/POT EXEMPTION AREAS

MAINE

WATERS EXEMPT FROM ALL ALWTRP REGULATIONS

State regulations may still apply.

PLAN EXEMPTED AREAS BOUNDARIES

Waters landward of the 72 COLREGS lines from Maine through Florida are exempt from Plan requirements with certain exceptions. The following COLREGS areas in Maine are NOT EXEMPT from Plan regulations:

Casco Bay is NOT EXEMPT

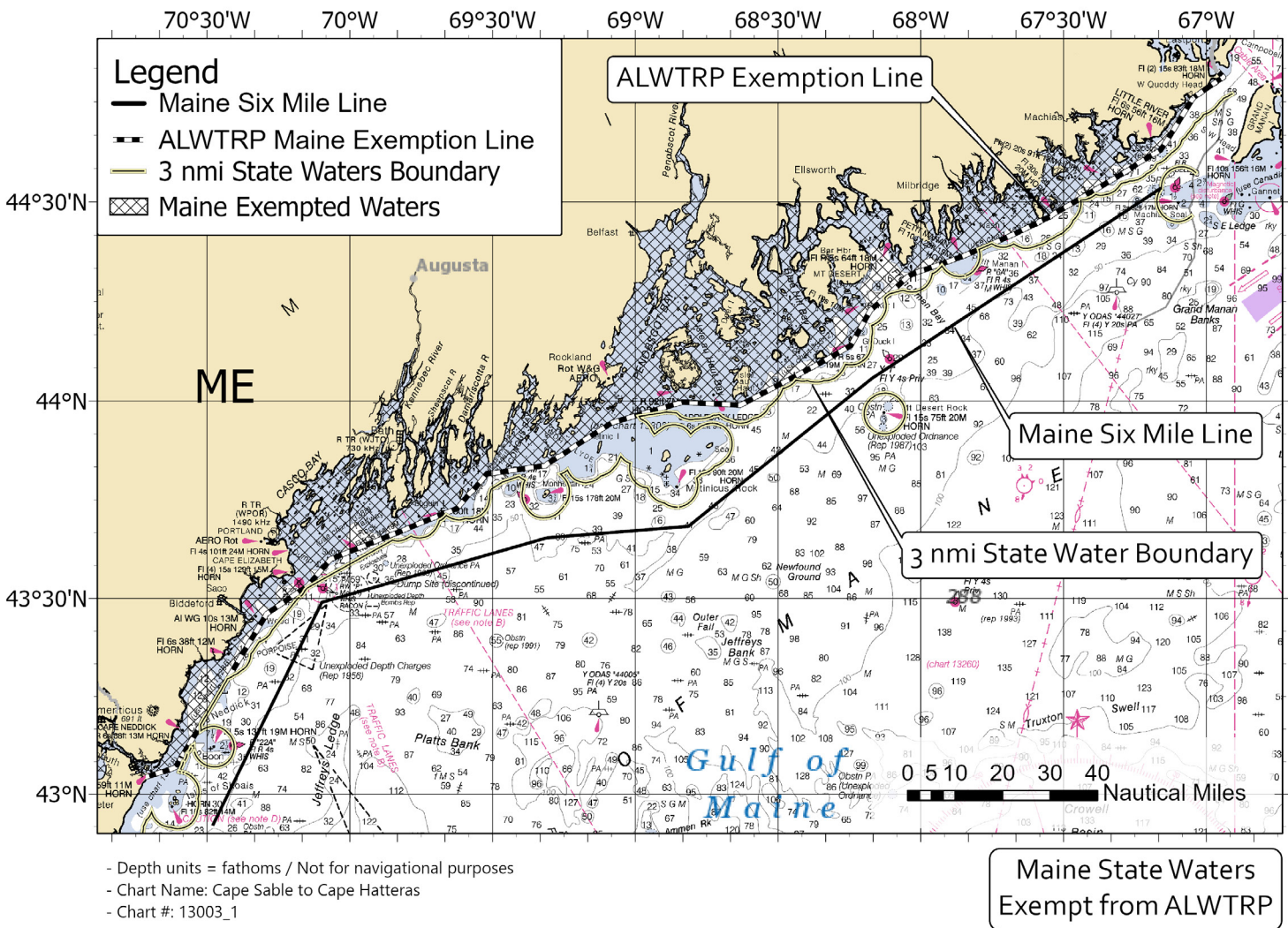
Exempted areas are those landward of a line that connects the points below. See corresponding map on page 53.

1. Odiornes Pt. Portsmouth NH: 43° 02.55' N/70°43.33' W
2. R 2KR Whistle to Kittery Point: 43°02.93' N/70°41.47' W
3. N 2MR to Murray Rock: 43°04.06' N/70°36.70' W
4. RW CP Whistle to Cape Porpoise: 43°20.23' N/70°23.64' W
5. RW WI Whistle to Wood: 43°27.63' N/70°17.48' W
6. G 1 to East Hue and Cry: 43°31.94' N/70°08.68' W
7. RG N BS to Bulwark Shoal: 43°36.04' N/70°03.98' W
8. R 20ML Bell to Mile Ledge: 43°41.44' N/69°45.27' W
9. R 2BR Bell to Bantam Rock: 43°43.64' N/69°37.58' W
10. GR C PL to Pemaquid Ledge: 43°48.96' N/69°31.15' W
11. R 2 OM Whistle to Old Man Ledge: 43°50.28' N/ 69°18.86' W, 44°25.74' N/67° 38.39' W
12. G 5TB Bell to Two Bush Channel: 43°56.72' N/69°04.89' W
13. R 2A Bell to Old Horse Ledge: 43°59.83' N/68°50.06' W
14. R 2 Bell to Roaring Bull Ledge, Isle Au Haut: 43°59.36' N/68°37.95' W
15. Southern Point to Great Duck I: 44°08.36' N/68°14.75' W
16. R 8BI Whistle to Baker I: 44°13.55' N/68°10.71' W
17. R 2S Bell to Schoodic I: 44°19.08' N/68° 02.05' W
18. R N 2 to Petit Manan I: 44°21.66' N/67°51.78' W
19. R 2SR Bell to Seahorse Rock, west of Great Wass I Freeman Rock—east of Great Wass I: 44°27.77' N/67°32.86' W
20. Obstruction to southeast of Cutler: 44°37.70' N/67°09.75' W
21. R 28M Whistle to Baileys Mistake: 44°45.51' N/67°02.87' W
22. R N 2 to Morton Ledge: 44°47.36' N/66°59.25' W
23. G 1 Whistle to West Quoddy Head: 44°48.64' N/66°56.43' W
24. R N 2 to Quoddy Narrows: 44°49.67' N/66°57.77' W

ALWTRP TRAP/POT EXEMPTION AREAS

MAINE WATERS EXEMPT FROM ALL ALWTRP REGULATIONS

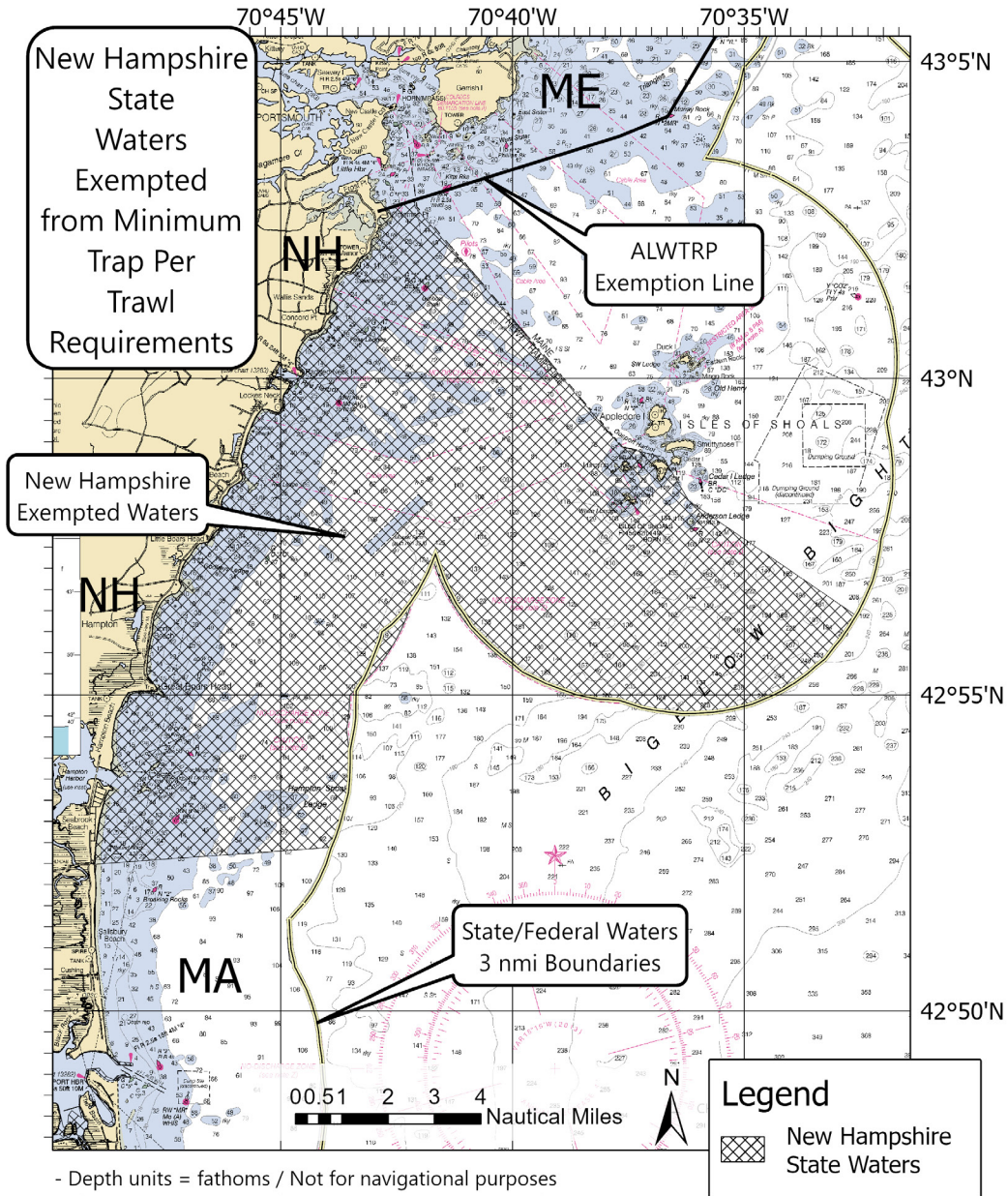
State regulations may still apply.



ALWTRP TRAP/POT EXEMPTION AREAS

NEW HAMPSHIRE MINIMUM TRAP/TRAWL EXEMPTIONS

All New Hampshire state waters are exempt from federal minimum trap per trawl requirements, but are subject to all other Plan requirements.



- Depth units = fathoms / Not for navigational purposes
- Chart Name: Portsmouth to Cape Ann; Hampton Harbor
- Chart #: 13278_1

ALWTRP TRAP/POT EXEMPTION AREAS

NEW HAMPSHIRE WATERS EXEMPT FROM ALL ALWTRP REGULATIONS

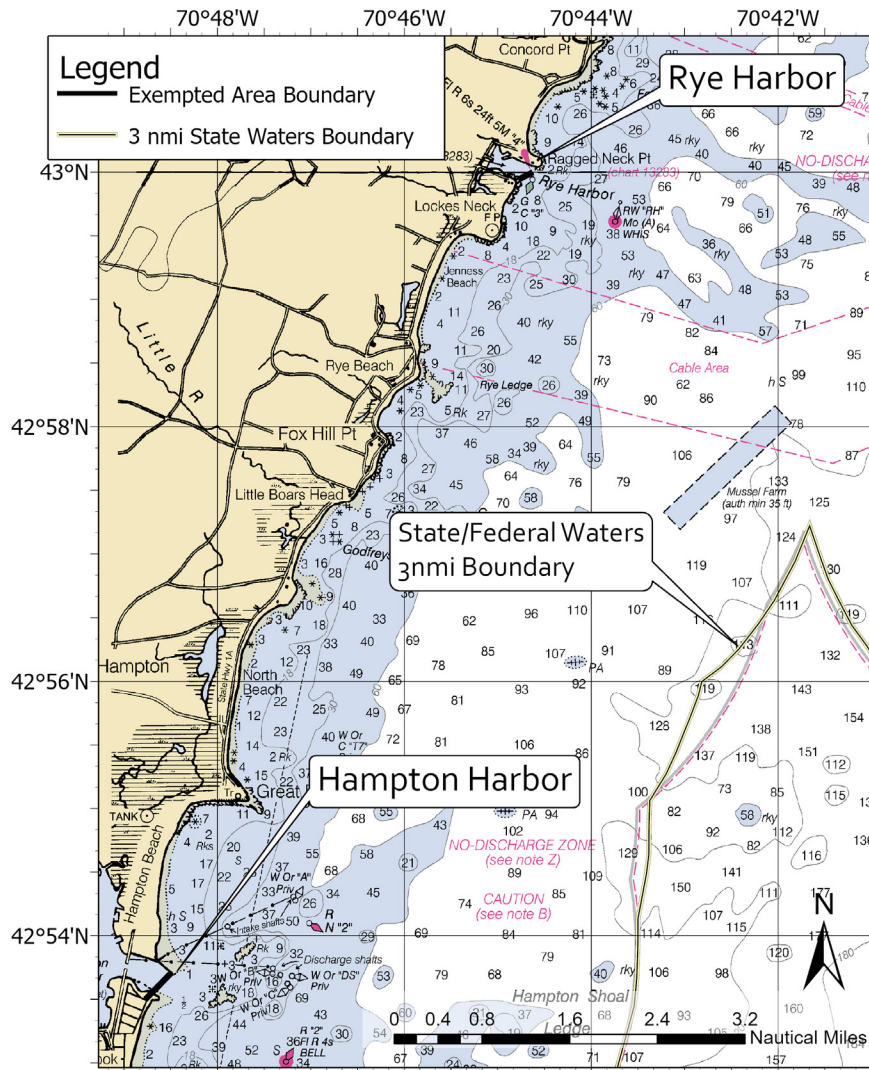
PLAN EXEMPTED AREAS BOUNDARIES

Waters landward of the 72 COLREGS lines are exempt from Plan requirements with certain exceptions. The following COLREGS areas in New Hampshire are NOT EXEMPT from Plan regulations:

Portsmouth Harbor is NOT EXEMPT.

Areas are landward of the following lines:

- A line from -70°48.516' W/42°53.691' N to -70°48.748' W/42°53.516' N (Hampton Harbor)
- A line from -70°44.654' W/42°59.986' N to -70°44.737' W/42°59.956' N (Rye Harbor)



- Depth units = fathoms / Not for navigational purposes
- Chart Name: Portsmouth to Cape Ann; Hampton Harbor
- Chart #: 13278_1

CHS, Esri, DeLorme, NaturalVue

ALWTRP TRAP/POT EXEMPTION AREAS

MASSACHUSETTS MINIMUM TRAP/TRAWL EXEMPTIONS

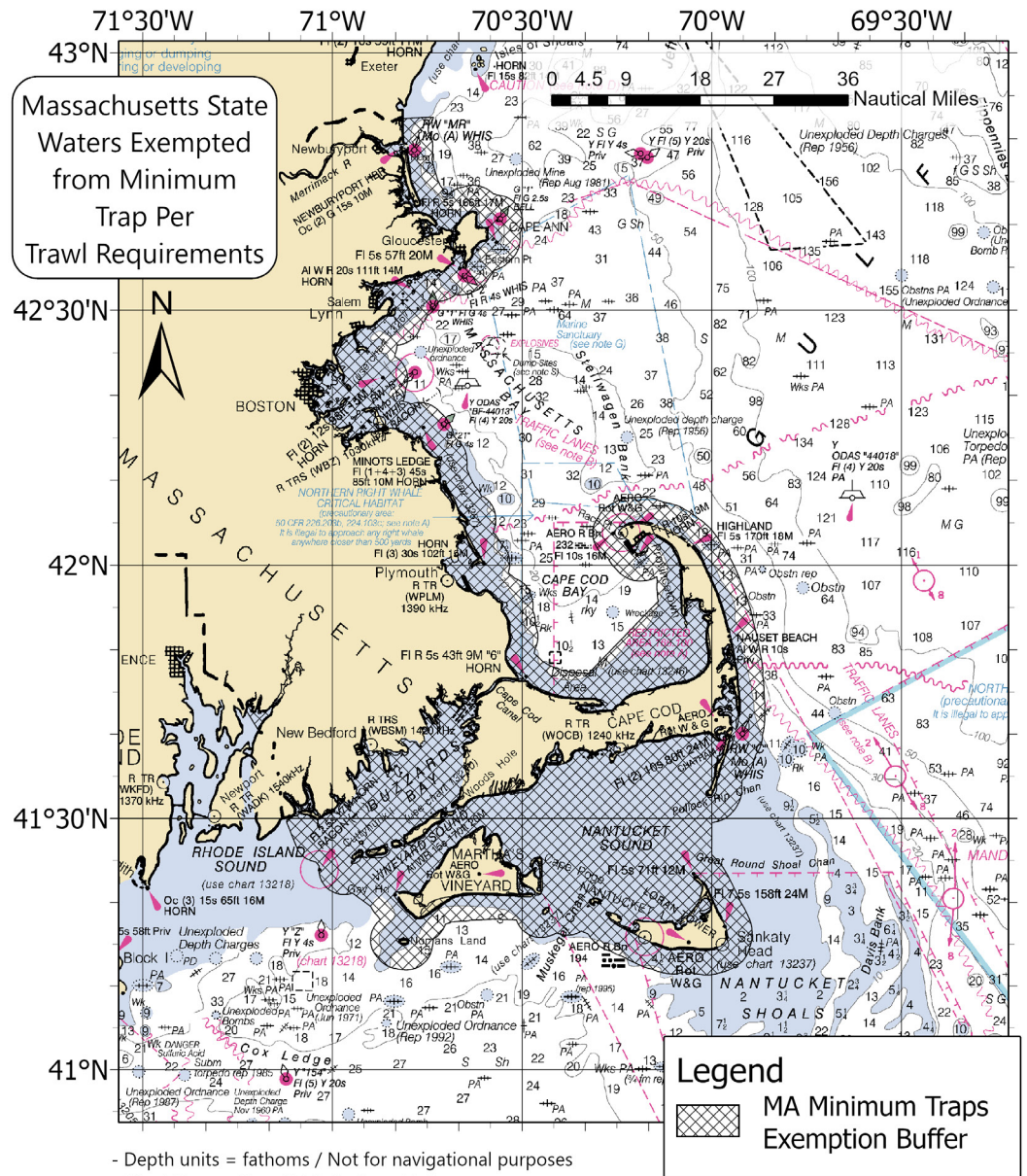
The following Massachusetts state waters are exempt from ONLY the Plan's minimum trap per trawl requirements. However, lobster regulations require that three traps or less must have one endline.

From the New Hampshire border to 70°W longitude south of Cape Cod, waters in LMA 1 and the Outer Cape Lobster Management Area (as defined in the American lobster fishery regulations under § 697.18), from the shoreline to 3 nautical miles from shore, and including waters of Cape Cod Bay southeast of a straight line connecting 41°55.8'N lat., 70°8.4'W long. and 41°47.2'N lat., 70°19.5'W long.

From 70°W longitude south of Cape Cod to the Rhode Island border, all Massachusetts state waters in LMA 2 and the Outer Cape Lobster Management Area (as defined in the American lobster fishery regulations under §697.18), including federal waters of Nantucket Sound west of 70°W longitude.

The following minimum trap per trawl exempted areas are also required to have area specific gear marking colors for single traps:

- Single traps in exempt MA state waters in LMA 1—RED & WHITE
- Single traps in exempt MA state waters in LMA 2—RED & BLACK
- Single traps in exempt MA state waters in Outer Cape—RED & YELLOW



- Depth units = fathoms / Not for navigational purposes
 - Chart Name: Cape Sable to Cape Hatteras
 - Chart #: 13003_1

MASSACHUSETTS WATERS EXEMPT FROM ALL ALWTRP REGULATIONS

PLAN EXEMPTED AREAS BOUNDARIES

Areas landward of the following lines:

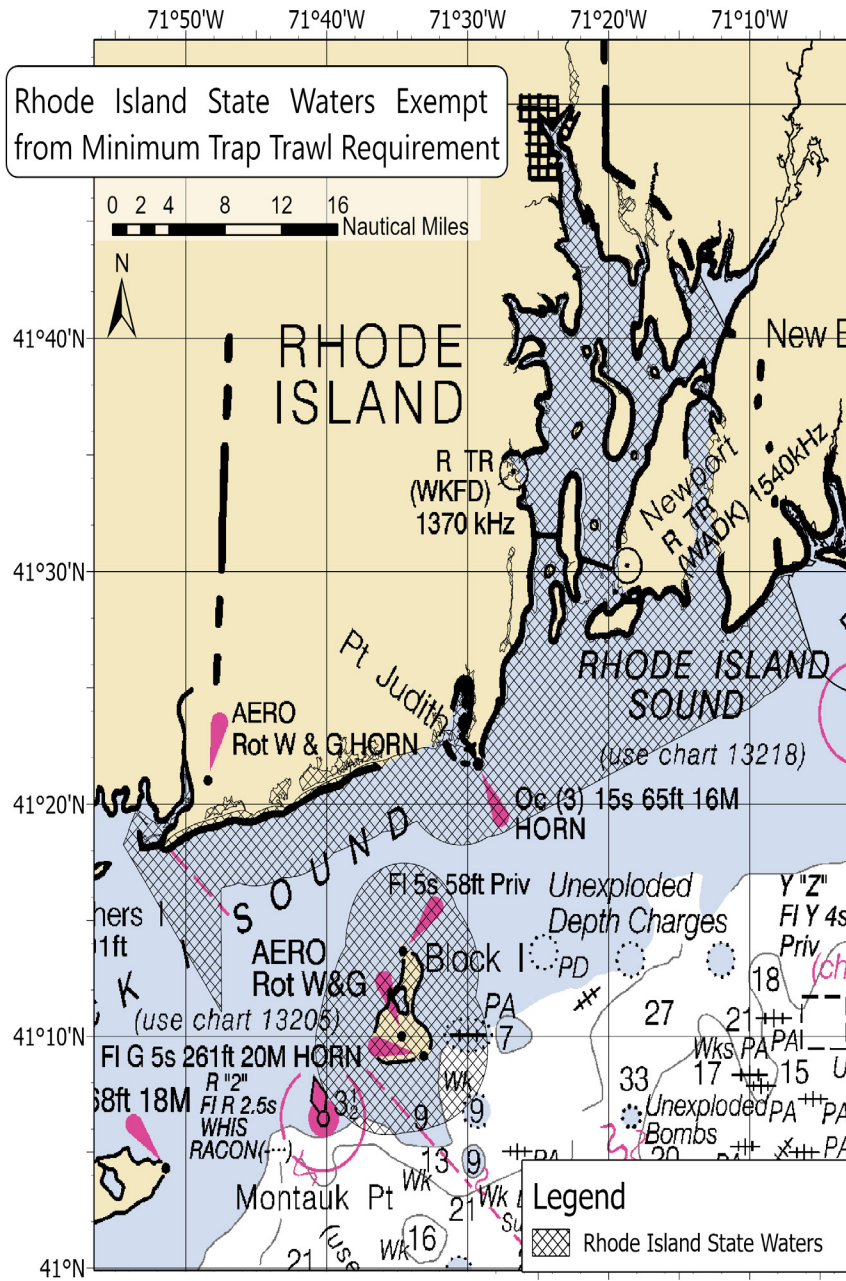
- Waters landward of the first bridge over any embayment, harbor, or inlet and
- Massachusetts state waters are not included in the 72 COLREGS general exemption

ALWTRP TRAP/POT EXEMPTION AREAS

RHODE ISLAND MINIMUM TRAP/TRAWL EXEMPTIONS

All Rhode Island state waters are exempt from federal minimum trap per trawl requirements, but are subject to all other Plan requirements, including the following gear marking requirements:

- Single traps in exempt RI state waters—RED & BLUE



- Depth units = fathoms / Not for navigational purposes
 - Chart Name: Cape Sable to Cape Hatteras
 - Chart #: 13003_1

ALWTRP TRAP/POT EXEMPTION AREAS

RHODE ISLAND WATERS EXEMPT FROM ALL ALWTRP REGULATIONS

PLAN EXEMPTED AREAS BOUNDARIES

Waters landward of the 72 COLREGS lines.

Pt. Judith Pond Inlet

A line from -71° 30.781' W/41° 22.441' N to -71° 30.893' W/41° 22.447' N

Ninigret Pond Inlet

A line from -71° 38.300' W/41° 21.310' N to -71° 38.330' W/41° 21.300' N

Quonochontaug Pond Inlet

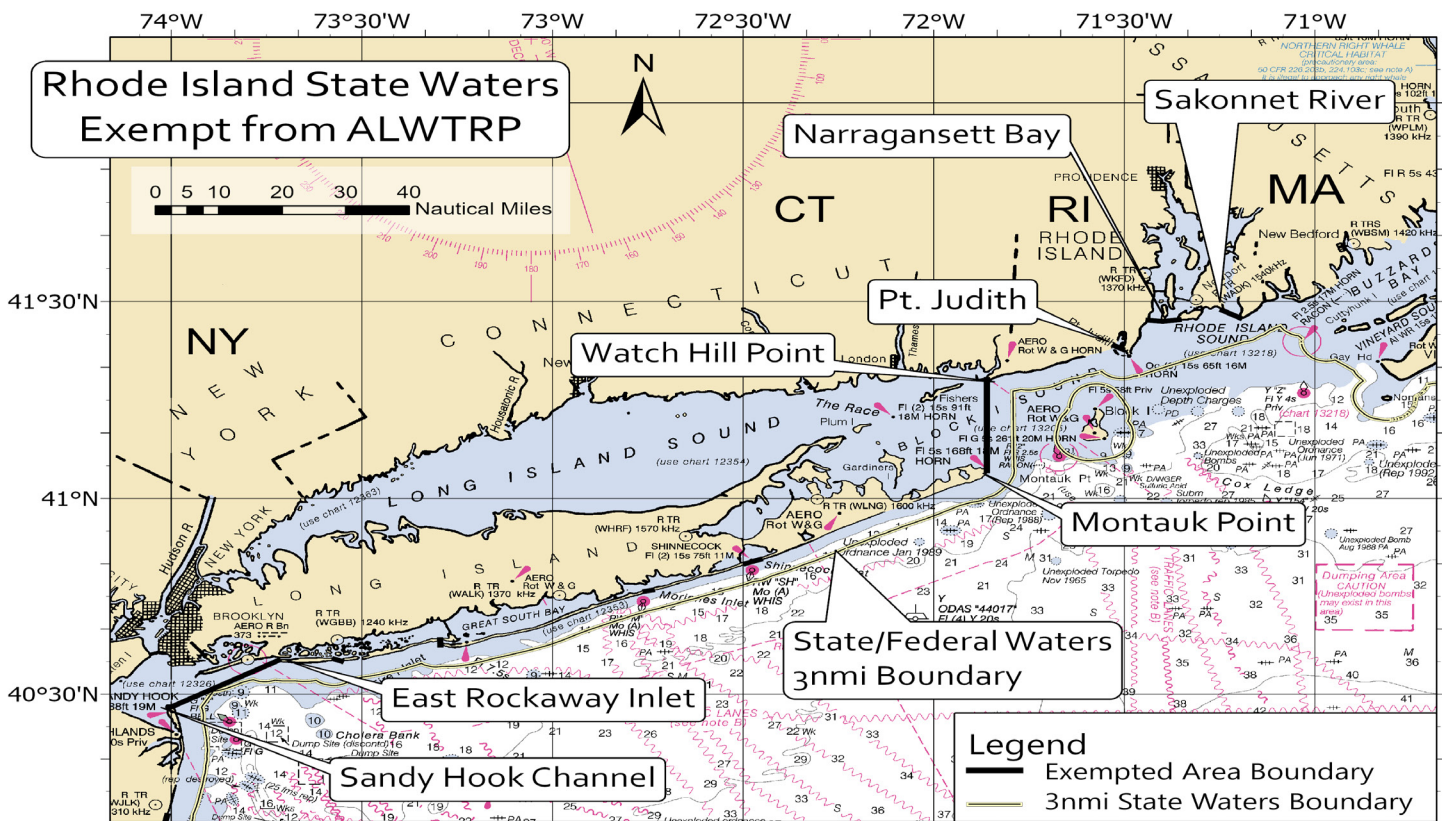
A line from -71° 43.061' W/41° 19.875' N to -71° 43.115' W/41° 19.879' N

Weekapaug Pond Inlet

A line from -71° 45.750' W/ 41° 19.660' N to -71° 45.780' W/41° 19.660' N

Pettaquamscutt Inlet

A line from -71° 26.400' W/41° 26.550' N to -71° 26.505' W/41° 26.500' N



- Depth units = fathoms / Not for navigational purposes
 - Chart Name: Cape Sable to Cape Hatteras
 - Chart #: 13003_1



U.S. Secretary of Commerce

Gina M. Raimondo

Under Secretary of Commerce for Oceans
and Atmosphere

Dr. Rick Spinrad

Assistant Administrator for Fisheries

Janet Coit

March 2022

www.fisheries.noaa.gov

OFFICIAL BUSINESS

**National Marine
Fisheries Service**

Greater Atlantic Regional Fisheries Office
55 Great Republic Drive
Gloucester, MA 01922